

# **DELHI TRANSCO LTD.**

STATE LOAD DISPATCH CENTER

## **PROGRESS REPORT**

\*\*\*\*\*

**AUGUST 2016**

<b>S. No.</b>	<b>CONTENTS</b>	<b>Page No.</b>
<b>1.</b>	<b>Salient Features of Delhi Power System</b>	<b>3</b>
<b>2.</b>	<b>Performance of Generating Stations within Delhi</b>	<b>4</b>
<b>3.</b>	<b>Details of Outage of Generating Stations within Delhi</b>	<b>5-14</b>
<b>4.</b>	<b>Allocation of Power to Delhi from unallocated quota of central sector</b>	<b>15</b>
<b>5.</b>	<b>Allocation of Power to Discoms</b>	<b>16</b>
<b>6.</b>	<b>Power Availability Demand Position of Delhi at the time of occurrence of Peak Demand</b>	<b>17</b>
<b>7.</b>	<b>Power Availability Demand Position of Delhi at the time of occurrence of Maximum Un-Restricted Demand</b>	<b>18</b>
<b>8.</b>	<b>Source wise scheduled drawl from grid and Availability within Delhi</b>	<b>19-22</b>
<b>9.</b>	<b>Shedding Details</b>	<b>23-27</b>
<b>10.</b>	<b>Load Curve for the Day of Peak Demand</b>	<b>28</b>
<b>11.</b>	<b>Load Curve for the day of occurrence of Maximum Un-Restricted Demand</b>	<b>29</b>
<b>12.</b>	<b>Load Curve for the day of Maximum Energy Consumed</b>	<b>30</b>
<b>13.</b>	<b>Load Curve for the day of Maximum Un-Restricted Energy Demand</b>	<b>31</b>
<b>14.</b>	<b>Load Duration Curve</b>	<b>32</b>
<b>15.</b>	<b>Frequency Analysis</b>	<b>33</b>
<b>16.</b>	<b>Voltage Profile for significant 220kV Sub-Stations</b>	<b>34</b>
<b>17.</b>	<b>Voltage Profile for significant 400kV Sub-Stations</b>	<b>35-36</b>
<b>18.</b>	<b>Details of Capacitors Installations in Delhi</b>	<b>37-42</b>
<b>19.</b>	<b>Tripping Details of 400/220 KV System in Delhi Power System</b>	<b>43-46</b>
<b>20.</b>	<b>Details of Under frequency Relay operations in Delhi Power System</b>	<b>47</b>

Sr. No.	Features	AUG 2015	AUG 2016
1	<b>Effective Generation Capacity within Delhi in MW</b>		
	Rajghat Power House	135	135
	Gas Turbine	270	270
	Pragati Power Corporation Ltd.	330	330
	Badapur Thermal Power Station	705	705
	Rithala GT	108	108
	Bawana	1372	1372
	TOWMCL	16	16
	Total	2936	2936
2	<b>Maximum Unrestricted Demand (MW)</b>	5438	<b>5707</b>
	Date	27.08.2015	05.08.2016
	Time	22.54.38	15.30.47
3	<b>Peak Demand met (MW)</b>	5434	<b>5707</b>
	Date	27.08.2015	05.08.2016
	Time	22.54.38	15.30.47
4	Peak Availability (MW)	5309	5604
5	Shortage (-) / Surplus (+) in MW	(-) 125	(-) 103
6	Percentage Shortage (-) / Surplus (+)	(-) 2.3	(-) 1.800
7	Maximum Energy Consume in a day (Mus)	112.083	117.129
8	Energy Consumed during the month	3078.010	<b>3207.237</b>
9	<b>Load Shedding in Mus</b>		
A)	Due to Grid Restrictions		
i)	Under Frequency Relay Operations	0.000	0.000
ii)	Manual Load shedding from DTL S/Stns.	0.000	0.000
iii)	Load Shedding due to low frequency / Low Voltage / TTC/ATC Violation		
	NDPL	0.163	0.127
	BRPL	0.969	0.527
	BYPL	0.042	0.040
	NDMC	0.010	0.000
	MES	0.000	0.000
iv)	Due to transmission Constraints in Central Sector	0.000	0.000
	<b>Total due to Grid Restriction</b>	<b>1.184</b>	<b>0.694</b>
B)	Due to Constraints in System in Mus		
	DTL	0.794	1.368
	NDPL	0.385	0.416
	BRPL	0.725	0.654
	BYPL	0.426	0.084
	NDMC	0.000	0.009
	MES	0.000	0.000
	Other Agencies	0.000	0.003
	<b>Total</b>	<b>2.330</b>	<b>2.534</b>
11	<b>Grand Total in Mus</b>	<b>3.514</b>	<b>3.228</b>

2. PERFORMANCE OF GENERATING STATIONS WITHIN DELHI DURING AUGUST 2016

A) For the month of August 2016

All Figures in MUs

S. No	Stations	Gross Generation	Aux. Consumption	Net Generation	Availability (%)	Backing Down
1.	RPH	0.000	0.538	-0.538	0.00	--
2.	GT	51.743	1.711	50.032	80.91	107.447
3.	PPCL	164.740	4.082	160.658	94.99	64.410
4.	BTPS	263.197	24.934	238.263	59.99	35-216
5.	Rithala	0.000	0.062	-0.062	<b>89.17</b>	61.008
6.	Bawana	194.552	6.705	187.847	68.93	498.575
7.	Towmcl	10.994	1.769	9.225	--	--
	<b>TOTAL</b>	<b>685.226</b>	<b>39.801</b>	<b>645.425</b>	<b>--</b>	<b>559.583</b>

B) For the Year 2016-17 (Upto August 2016)

Power Station	Effective Capacity (MW)	Net Generation in MUs for Aug 2016	Availability (%) for Aug 2016	PLF (%) for Aug 2016	Cumulative Generation in MUs upto Aug 2016 for the year 2016-17	Cumulative Availability in % upto Aug 2016 for the year 2016-17	Cumulative PLF in % upto Aug 2016 for the year 2016-17
RPH	135	-0.538	0.00	0.760	-3.270	0.000	0.940
GT	270	50.032	80.91	25.77	289.853	80.06	30.17
PPCL	330	160.658	94.99	67.52	866.186	92.02	73.43
BTPS	705	238.263	59.99	51.02	1115.113	56.49	48.42
Rithala	108	-0.062	<b>89.17</b>	0.00	-0.306	<b>89.17</b>	0.00
Bawana	1372	187.847	68.93	19.43	704.267	68.47	14.50
Towmcl	16	9.225	--	92.36	55.487	--	--
<b>TOTAL</b>	<b>2936</b>	<b>645.425</b>	<b>--</b>	<b>--</b>	<b>3027.33</b>	<b>--</b>	<b>--</b>

### 3 DETAILS OF OUTAGES OF GENERATING STNS. WITHIN DELHI W.E.F. APRIL 2016

#### RPH

Unit No	Capacity in MW	Outage		Synchronization		Reason of Outage
		Date	Time	Date	Time	
1	67.5	08.05.15	13:40	--	--	Tripped on boiler tube leakage

Unit No	Capacity in MW	Outage		Synchronization		Reason of Outage
		Date	Time	Date	Time	
2	67.5	21.05.15	10:20	--	--	Stopped due to shortage of coal

#### (B) Gas Turbine

Unit No	Capacity in MW	Outage		Synchronization		Reason of Outage
		Date	Time	Date	Time	
1	30	30.03.16	13:52	17.04.16	10:45	Machine tripped as heavy jerk observed in Control room and 160 MVA Tr-i& II tripped at 220 KV end due to tripping of Geeta Colony to Wazirabad ckt. Machine not taken on load due to less demand from SLDC.
		17.04.16	10:45	17.04.16	18:45	Station shut down to attend ACW line.
		17.04.16	18:45	29.04.16	19:15	Stopped due to low demand and high frequency
		13.5.16	16:10	13.5.16	17:47	Machine stopped to replace the broken drain valve in the inlet line of ACW.
		15.5.16	08:40	15.5.16	11:00	machine stopped to attend the leakage of oil from LV bushing of Unit Transformer. Machine cleared by Electrical division at 11:00 hrs but machine not taken on load due to low schedule from SLDC.
		15.5.16	11:00	16.5.16	10:54	Machine stopped as per SLDC message
		23.5.16	15:46	25.5.16	15:30	Machine tripped due to tripping of 160 MVA Tr-I& II. After that machine not taken on load due to less demand
		28.5.16	12:01	6.6.16	09:58	Stopped due to low demand and high frequency
		10.6.16	16:54	10.6.16	17:08	machine came on FSNL as both the ICT 160 MVA TX-I & II tripped due to jek in the system.
		13.6.16	07:11	13.6.16	09:00	Machine tripped as heavy jerk observed in the system as both 160 MVA Tx-I & II tripped.
		4.7.16	17:53	6.7.16	08:50	Stopped due to low demand and high frequency
		15.7.16	00:32	15.7.16	18:18	
		15.7.16	21:42	20.7.16	10:58	
		20.7.16	15:25	21.7.16	14:45	
		1.8.16	14:55	1.8.16	15:40	Machine stopped due to heavy smoke from Turbine auxiliary compartment.
		1.8.16	18:43	2.8.16	10:00	Tripped due to failure of communication link with I/O packs.
		2.8.16	10:00	3.8.16	10:15	Stopped due to low demand and high frequency
		4.8.16	12:30	4.8.16	14:08	Machine stopped to replace 11 KV CKT breaker due to low SF6 gas pressure.
		5.8.16	19:05	29.8.16	19:35	Stopped due to low demand and high frequency
29.8.16	20:50	31.8.16	23:59			

Unit No	Capacity in MW	Outage		Synchronization		Reason of Outage
		Date	Time	Date	Time	
2	30	28.01.16	01:20	31.03.16	23:59	Stopped due to low demand and high frequency
		01.04.16	18:00	17.04.16	10:45	
		17.04.16	10:45	17.04.16	18:45	Station shut down to attend ACW line.
		17.04.16	18:45	5.5.16	15:11	Stopped due to low demand and high frequency
		5.5.16	15:57	5.5.16	16:40	Machine stopped due to problem in ACW line.
		7.5.16	17:02	7.5.16	17:52	Problem in battery charger
		19.5.16	00:02	19.5.16	01:03	T-Communication link inoperative
		23.5.16	15:46	23.5.16	15:50	Machine came on FSNL due to tripping of 160 MVA Tr-I& II.
		25.5.16	06:09	25.5.16	06:52	T-Communication link inoperative
		26.5.16	18:15	26.5.16	23:20	Machine tripped on high exhaust trip alarm.
		29.5.16	00:50	06.06.16	08.56	Stopped due to low demand and high frequency
		10.6.16	16:54	10.6.16	17:00	machine came on FSNL as both the ICT 160 MVA TX-I & II tripped due to jek in the system.
		13.6.16	07:11	13.6.16	13:40	Machine tripped as heavy jerk observed in the system as both 160 MVA Tx-I & II tripped.
		1.7.16	02:20	1.7.16	09:18	Loss of Field alarm appeared and machine tripped on Electrical Trouble Normal Shutdown.
		2.7.16	11:40	6.7.16	15:45	Stopped due to low demand and high frequency
		6.7.16	22:50	6.7.16	23:10	Loss of Field alarm appeared and machine tripped on Electrical Trouble Normal Shutdown.
		6.7.16	23:10	7.7.16	16:26	Stopped due to low demand and high frequency
		7.7.16	18:40	7.7.16	20:09	Loss of Field alarm appeared and machine tripped on Electrical Trouble Normal Shutdown.
		9.7.16	15:35	9.7.16	16:40	machine desynchroniz to check the Mvar problem.
		9.7.16	18:40	9.7.16	22:45	Loss of Field alarm appeared and machine tripped on Electrical Trouble Normal Shutdown.
		9.7.16	22:53	12.7.16	15:55	Stopped due to low demand and high frequency
		15.7.16	21:42	20.7.16	13:20	
		21.7.16	15:40	22.7.16	13:02	Machine tripped on Electrical trouble normal shut down.
		5.8.16	10:23	5.8.16	17:00	
5.8.16	17:00	12.8.16	12:58	Stopped due to low demand and high frequency		
12.8.16	13:28	29.8.16	14:45			

Unit No	Capacity in MW	Outage		Synchronization		Reason of Outage
		Date	Time	Date	Time	
3	30	01.02.16	19:15	17.04.16	10:45	Stopped due to low demand and high frequency
		17.04.16	10:45	17.04.16	18:45	Station shut down to attend ACW line.
		17.04.16	18:45	12.05.16	12:00	Stopped due to low demand and high frequency
		12.5.16	12:00	19.5.16	23:09	Machine under shut down as permit taken by Electrical division to replace its 66 KV breaker.
		19.5.16	23:09	20.5.16	20:52	Machine available but not taken on load due to less schedule from SLDC
		20.5.16	23:58	06.06.16	15:40	Stopped due to low demand and high frequency
		6.6.16	18:06	9.6.16	15:50	
		9.6.16	18:46	30.6.16	14:30	Machine tripped due 'S' communication link inoperative.
		30.6.16	14:40	30.6.16	16:20	
		30.6.16	17:19	30.6.16	18:05	machine tripped on false alarm in Turbine or Accessories Area.
		01.07.16	01:00	31.08.16	23:59	Stopped due to low demand and high frequency

Unit No	Capacity in MW	Outage		Synchronization		Reason of Outage
		Date	Time	Date	Time	
4	30	29.01.16	14:00	17.04.16	10:45	Stopped due to low demand and high frequency
		17.04.16	10:45	17.04.16	18:45	Station shut down to attend ACW line.
		17.04.16	18:45	16.05.16	15:04	Stopped due to low demand and high frequency
		16.5.16	18:04	18.5.16	16:12	Machine stopped due to low schedule from SLDC
		21.5.16	16:05	21.5.16	17:57	supply of Computer failed.
		23.5.16	15:46	24.5.16	15:25	Machine tripped due to tripping of 160 MVA Tr-I& II. After that machine not taken on load due to less demand
		24.5.16	16:27	6.6.16	11:12	Stopped due to low demand and high frequency
		6.6.16	20:10	7.6.16	10:34	
		10.6.16	16:54	10.6.16	17:08	machine came on FSNL as both the ICT 160 MVA TX-I & II tripped due to jek in the system.
		10.6.16	18:32	13.6.16	12:55	Stopped due to low demand and high frequency
		13.6.16	22:38	20.6.16	08:33	
		20.6.16	16:30	24.6.16	12:14	
		24.6.16	17:45	30.6.16	10:07	
		30.6.16	19:00	30.6.16	19:55	Machine tripped on over temperature alarm
		2.7.16	08:48	8.7.16	10:51	Stopped due to low demand and high frequency
		8.7.16	12:20	14.7.16	11:45	
		14.7.16	15:10	31.08.16	23:59	

Unit No	Capacity in MW	Outage		Synchronization		Reason of Outage	
		Date	Time	Date	Time		
5	30	14.03.16	19:15	01.04.16	15:05	Stopped due to low demand and high frequency	
		11.04.16	19:06	11.04.16	21:22		
		17.04.16	10:45	17.04.16	18:38	Station shut down to attend ACW line.	
		18.04.16	12:54	24.04.16	10:55	Stopped due to low demand and high frequency	
		29.04.16	19:15	13.05.16	17:10		
		13.5.16	19:30	16.5.16	13:29	machine stopped to attend leakage of oil from IGV	
		20.5.16	23:42	21.5.16	18:08		
		21.5.16	18:55	21.5.16	20:04	Machine tripped on high exhaust temperature	
		22.5.16	11:46	23.5.16	11:30	Stopped due to low demand and high frequency	
		23.5.16	11:55	23.5.16	12:30	machine desynchronise to check the position of Bleed valve.	
		23.5.16	15:46	24.5.16	15:42	Machine tripped due to tripping of 160 MVA Tr-I& II. After that machine nottaken on load due to less demand	
		25.5.16	16:35	26.5.16	19:05	Stopped due to low demand and high frequency	
		27.5.16	00:07	27.5.16	17:20		
		27.5.16	17:25	28.5.16	11:07		
		29.5.16	22:10	29.5.16	22:22	Machine came on FSNL due to tripping of 160 MVA Tr-I& II.	
		10.6.16	16:54	10.6.16	17:08	machine came on FSNL as both the ICT 160 MVA TX-I & II tripped due to jek in the system.	
		11.6.16	20:45	13.6.16	11:12	Stopped due to low demand and high frequency	
		20.6.16	01:04	23.6.16	15:59	Machine stopped to inspect the low load reason on mahine by M/s BGGTS	
		23.6.16	16:00	24.6.16	16:18	Stopped due to low demand and high frequency	
		24.6.16	18:05	25.6.16	10:10		
		2.7.16	11:35	4.7.16	16:52		
		7.7.16	17:20	8.7.16	08:38		
		12.7.16	16:55	14.7.16	09:06		
		15.7.16	18:57	15.7.16	21:40		
		23.7.16	08:15	27.7.16	05:03		
		28.7.16	15:17	5.8.16	17:10		
		15.8.16	16:31	15.8.16	17:37		Heavy jerk observed in Control room. GT-5 tripped .Relay-P343 operated at protection panel.Both 160 MVA tr. Tripped.
		18.8.16	17:05	19.8.16	11:06		Stopped due to low demand and high frequency
		19.8.16	11:17	19.8.16	11:40	Machine desynchronize to check the hunting in load.	
		31.8.16	10:30	31.8.16	23:59	Stopped due to low demand and high frequency	



Unit No	Capacity in MW	Outage		Synchronization		Reason of Outage
		Date	Time	Date	Time	
6	30	19.03.16	11:40	6.04.16	12:00	Stopped due to low demand and high frequency
		06.04.16	12:00	11.04.16	18:10	machine taken under S/d for Combustion Inspection & Boroscopic Inspection
		11.04.16	21:06	17.04.16	10:45	Stopped due to low demand and high frequency
		17.04.16	10:45	17.04.16	18:45	Station shut down to attend ACW line.
		17.04.16	18:45	18.04.16	11:30	Stopped due to low demand and high frequency
		24.04.16	11:44	13.05.16	18:45	
		13.5.16	20:15	16.5.16	17:23	
		23.5.16	15:46	23.5.16	16:37	Machine tripped due to tripping of 160 MVA Tr-I& II.
		29.5.16	01:50	02.06.16	10:48	Machine stopped due to low schedule from SLDC
		10.6.16	16:54	10.6.16	17:08	machine came on FSNL as both the ICT 160 MVA TX-I & II tripped due to jek in the system.
		11.6.16	20:45	13.6.16	20:34	Stopped due to low demand and high frequency
		20.6.16	16:35	24.6.16	13:20	
		24.6.16	18:08	25.6.16	10:04	
		6.7.16	16:55	8.7.16	11:05	
		12.7.16	15:00	14.7.16	15:05	
		27.7.16	03:58	27.7.16	09:11	Machine tripped on Electrical trouble normal shut down. SF-6 second stage gas pressure low alarm appeared on protection pannel
		27.7.16	09:11	05.08.16	12:10	Stopped due to low demand and high frequency
		29.8.16	17:25	31.8.16	23:59	Machine stopped as there was no schedule from SLDC on Spot R-LNG.

Unit No	Capacity in MW	Outage		Synchronization		Reason of Outage
		Date	Time	Date	Time	
STG -1	30	29.1.16	14:00	01.04.16	18:05	M/c cleared from maintainence side but Stopped due to low demand and high frequency
		17.04.16	10:45	17.04.16	18:45	Station shut down to attend ACW line.
		17.04.16	18:45	29.04.16	19:15	Stopped due to low demand and high frequency
		01.5.16	21:27	01.5.16	22:59	Machine tripped due to failure of LT supply.
		13.5.16	16:10	13.5.16	18:48	Machinestopped due to problem in ACW line.
		23.5.16	15:46	23.5.16	17:25	Machine tripped due to tripping of 160 MVA Tr-I& II.
		23.5.16	19:20	24.5.16	14:04	Stopped due to low demand and high frequency
		29.5.16	00:50	06.06.16	11.44	
		10.6.16	16:54	10.6.16	17:53	machine tripped as both the ICT 160 MVA TX-I & II tripped due to jek in the system.
		13.6.16	07:11	13.6.16	10:45	Machine tripped as heavy jerk observed in the system as both 160 MVA Tx-I & II tripped.
		4.7.16	17:53	6.7.16	12:20	Stopped due to low demand and high frequency
		15.7.16	21:42	21.7.16	13:29	
		31.7.16	15:31	31.7.16	16:05	
		5.8.16	19:05	29.8.16	17:20	Machine stopped as per sSLDC to maintain only 72 MW generation.

Unit No	Capacity in MW	Outage		Synchronization		Reason of Outage
		Date	Time	Date	Time	
STG -2	30	29.01.16	14:00	17.04.16	10:45	M/c cleared from maintainence side Stopped due to low demand and high frequency
		17.04.16	10:45	17.04.16	18:45	Station shut down to attend ACW line.
		17.04.16	18:45	19.05.16	07:45	Stopped due to low demand and high frequency
		21.5.16	16:04	21.5.16	19:15	Machine tripped due to tripping of GT#4
		23.5.16	15:46	23.5.16	17:25	Machine tripped due to tripping of 160 MVA Tr-I& II.
		23.5.16	17:25	06.06.16	17:04	Stopped due to low demand and high frequency
		6.6.16	17:19	6.6.16	19:38	machine tripped on Hot well very high alarm as the parameter of STG# 2 got freezed and actual value of the same was not appearing on BCD.
		6.6.16	20:10	7.6.16	12:55	Stopped due to low demand and high frequency
		10.6.16	16:54	13.6.16	18:06	machine tripped as both the ICT 160 MVA TX-I & II tripped due to jek in the system. Machine not taken on load due low demand.
		13.6.16	22:38	20.6.16	11:40	Stopped due to low demand and high frequency
		20.6.16	16:35	24.6.16	14:54	
		24.6.16	17:47	30.6.16	13:45	
		30.6.16	19:00	30.6.16	22:03	Machine tripped due to tripping of GT#4
		02.07.16	08:48	31.08.16	23:59	Stopped due to low demand and high frequency

Unit No	Capacity in MW	Outage		Synchronization		Reason of Outage
		Date	Time	Date	Time	
STG -3	30	19.03.16	18:15	01.04.16	17:45	Stopped due to low demand and high frequency
		01.04.16	18:30	01.04.16	19:26	Tripped on Gen. Class-A relay
		01.04.16	19:32	01.04.16	20:07	Tripped on Gen. Class-A relay
		11.04.16	21:06	11.04.16	21:45	Machine stopped due to stopping of GT#6.
		17.04.16	10:45	17.04.16	19:57	Station shut down to attend ACW line.
		29.04.16	19:15	09.05.16	15:52	Stopped due to low demand and high frequency
		16.5.16	16:02	16.5.16	16:30	Machine stopped to attend false over speed alarm
		21.5.16	21:28	21.5.16	23:52	Machine tripped on Turbine FJB shaft vibration very high
		23.5.16	15:46	23.5.16	17:30	Machine tripped due to tripping of 160 MVA Tr-I& II.
		29.5.16	22:10	29.5.16	23:45	Machine tripped due to tripping of 160 MVA Tr-I& II.
		31.5.16	20:16	31.5.16	23:45	SNH feeder tripped & found earth fault.
		2.6.16	11:36	2.6.16	14:00	Machine tripped while changing the load from auxiliary to pressure.
		10.6.16	16:54	10.6.16	17:38	machine tripped due to jek in the system.
		11.6.16	20:45	13.6.16	13:26	Stopped due to low demand and high frequency
		13.6.16	21:30	13.6.16	22:30	Machine tripped on Class A relay.
		19.6.16	07:01	19.6.16	08:02	Machine tripped on FJB shaft vibration very high.
		20.6.16	16:35	24.6.16	15:16	Stopped due to low demand and high frequency
		24.6.16	18:12	25.6.16	11:55	
		7.7.16	17:20	8.7.16	11:18	
		12.7.16	16:55	14.7.16	12:30	
		18.7.16	04:38	18.7.16	06:45	Machine tripped on FJB shaft Vibration very high.
		27.7.16	03:58	27.7.16	09:11	Machine tripped due to tripping of GT-6 as running on single HRSG#6.
		28.7.16	15:17	05.08.16	16:30	Stopped due to low demand and high frequency
		5.8.16	18:01	5.8.16	18:52	Machine tripped on turbine oil pressure very low.
		9.8.16	10:55	9.8.16	11:31	Machine tripped on low vacuum due to tripping of CWP-1
		15.8.16	16:31	15.8.16	17:28	Heavy jerk observed. STG-3 tripped due to failure of auxilary supply.
		28.8.16	14:28	28.8.16	16:16	Machine tripped on generator housing vibration high.after replacing the Vibratio card machine synchronized.
		28.8.16	16:27	28.8.16	17:03	Machine tripped on generator and turbine housing vibration high.
		31.8.16	10:30	31.8.16	23:59	Machine stopped as per sSLDC to maintain only 36 MW generation.

**(C) PRAGATI**

Unit No	Capacity in MW	Outage		Synchronization		Reason of Outage
		Date	Time	Date	Time	
1	104	01.04.16	00.00	06.04.16	06.00	Stopped due to low demand and high frequency
		01.05.16	05.58	01.05.16	13.15	Unit stopped by stn.
		07.05.16	11.37	07.05.16	12.34	Unit tripped.
		23.05.16	22.16	24.05.16	10.01	Unit stopped and started due to low demand and high frequency
		09.06.16	14:33	09.06.16	15:10	GT#1 tripped on grid disturbance.
		18.06.16	07:09	18.06.16	09:13	GT#1 tripped on grid disturbance.
		18.06.16	10:09	18.06.16	10:38	GT#1 tripped.
		11.07.16	08.10	11.07.16	09.32	Unit tripped due to grid disturbance
		16.07.16	08.50	19.07.16	11.00	Stopped due to low demand and high frequency
		19.07.16	11.00	19.07.16	14.01	Unit not available
		30.07.16	00.00	31.07.16	14.10	Stopped due to low demand and high frequency

Unit No	Capacity in MW	Outage		Synchronization		Reason of Outage
		Date	Time	Date	Time	
2	104	01.04.16	00.00	01.04.16	03.18	Stopped due to low demand and high frequency
		06.04.16	08.40	11.04.16	04.31	G.T.-2 was swpped by G.T. -1 and started as desired
		15.04.16	06.06	15.04.16	12.02	Unit stopped
		24.04.16	14.15	25.04.16	06.48	Stopped due to low demand and high frequency
		28.04.16	12.44	28.04.16	13.35	Unit tripped
		06.05.16	11.28	06.05.16	16.00	Unit tripped due to grid disturbance
		06.05.16	16.00	11.05.16	13.27	Unit tripped
		26.05.16	21.18	26.05.16	22.55	Unit tripped
		05.06.16	03:59	08.06.16	15:17	GT2 tripped
		10.06.16	16:50	10.06.16	17:38	GT#2 tripped on grid disturbance.
		13.06.16	19:49	13.06.16	20:54	GT#2 tripped on grid disturbance.
		18.06.16	07:09	18.06.16	09:54	GT#2 tripped on grid disturbance.
		19.06.26	05:58	20.06.16	06:00	Stopped due to low demand and high frequency
		13.07.16	16.29	15.07.16	19.18	Unit tripped
		31.07.16	07.22	31.07.16	23.59	Stopped due to low demand and high frequency

Unit No	Capacity in MW	Outage		Synchronization		Reason of Outage
		Date	Time	Date	Time	
STG	122	01.04.16	00.00	01.04.16	09.07	Stopped due to low demand and high frequency
		21.04.16	14.59	21.04.16	16.25	STG Tripped
		24.04.16	13.15	24.04.16	21.27	Unit stopped
		29.04.16	11.58	29.04.16	12.46	STG Tripped
		02.05.16	15.57	02.05.16	16.54	STG Tripped
		06.05.16	11.28	06.05.16	12.12	Unit tripped due to grid disturbance
		07.05.16	11.40	07.05.16	13.30	Unit tripped alongwith G.T.-1
		08.05.16	17.49	08.05.16	19.35	STG Tripped
		10.05.16	17.55	10.05.16	23.58	STG Tripped
		13.05.16	19.02	13.05.16	20.50	Stopped due to low demand and high frequency
		05.06.16	14:20	05.06.16	15:06	STG tripped on grid disturbance.
		09.06.16	14:33	09.06.16	16:22	STG tripped on grid disturbance.
		10.06.16	16:50	10.06.16	18:00	STG tripped on grid disturbance.
		13.06.16	12:14	13.06.16	17:46	Stopped due to low demand and high frequency
		13.06.16	19:49	13.06.16	21:34	STG tripped on grid disturbance.
		18.06.16	07:09	18.06.16	10:05	STG tripped on grid disturbance.
		18.06.16	10:09	18.06.16	10:57	STG tripped on GT#1 tripped
		27.06.16	19:06	28.06.16	03:36	Stopped due to low demand and high frequency
		09.07.16	12.53	09.07.16	15.19	Unit tripped
		11.07.16	08.05	11.07.16	10.52	Unit tripped due to grid disturbance
18.07.16	18.37	18.07.16	19.44	Unit tripped		
30.07.16	09.17	30.07.16	18.23	Stopped due to low demand and high frequency		
31.07.16	07.22	31.07.16	16.17			

**(D) BADARPUR THERMAL POWER STATION**

Unit	Capacity in MW	Outage		Synchronization		Reason of Outage
		Date	Time	Date	Time	
1	95	01.04.15	00.00	31.08.16	23.59	Stopped due to low demand and high frequency

Unit	Capacity in MW	Outage		Synchronization		Reason of Outage
		Date	Time	Date	Time	
2	95	24.09.15	19.52	31.08.16	23.59	Stopped due to low demand and high frequency

Unit	Capacity in MW	Outage		Synchronization		Reason of Outage
		Date	Time	Date	Time	
3	95	09.10.15	01.00	31.08.16	23.59	Stopped due to low demand and high frequency

Unit	Capacity in MW	Outage		Synchronization		Reason of Outage
		Date	Time	Date	Time	
4	210	12.12.15	14.30	04.04.16	07.47	Stopped due to low demand and high frequency
		11.04.16	14.03	12.04.16	20.11	Economizer tube leakage
		24.04.16	1621	24.04.16	21.52	PA Fan A lub oil sys temp high
		01.05.16	16.30	01.05.16	17.55	Human Error(Vacuum low)
		10.05.16	05.34	11.05.16	01.39	Boiler Drum Impulse line lkg
		11.05.16	09.08	21.05.16	03.10	Gen Seal problem
		21.05.16	04.04	21.05.16	04.38	ID Fan A Thermal Overload
		21.05.16	15.10	21.05.16	16.45	Relay malfunction (air flow low)
		03.06.16	21.30	05.06.16	07.03	Water Platen Lkg
09.06.16	14.27	09.06.16	18.22	Grid Disturbance		

Unit	Capacity in MW	Outage		Synchronization		Reason of Outage
		Date	Time	Date	Time	
5	210	24.04.16	16.21	24.04.16	21.52	Stopped due to temp. high.
		06.06.16	09.50	07.06.16	13.53	Water leakage
		09.06.16	14.28	09.06.16	17.11	Tripped due to grid disturbance
		17.07.16	14.30	17.07.16	18.15	Oil surge relay cable inter core shorting.
		09.08.16	22.20	10.08.16	02.29	AVR and excitation system problem.

**(E) BAWANA CCGT POWER STATION**

Unit	Capacity in MW	Outage		Synchronization		Reason of Outage
		Date	Time	Date	Time	
1	216	16.07.15	02.18	31.07.16	23.59	Machine tripped due to compressor stalling alarm

Unit	Capacity in MW	Outage		Synchronization		Reason of Outage
		Date	Time	Date	Time	
2	216	24.03.16	00.00	03.05.16	06.00	Stopped due to low demand and high frequency
		03.05.16	06.00	03.05.16	09.30	Machine shutdown for planned mtc.
		03.05.16	09.30	13.06.16	15.00	Stopped due to low demand and high frequency
		13.06.16	15.00	16.06.16	17.15	Machine shut down for planned maintenance due to annual testing of generator transformer .
		16.06.16	17.15	26.06.16	09.24	Stopped due to low demand and high frequency

Unit	Capacity in MW	Outage		Synchronization		Reason of Outage
		Date	Time	Date	Time	
STG-1	254	28.03.16	00.00	15.04.16	10.00	Planned Shut down.
		15.04.16	10.00	03.05.16	06.00	Stopped due to low demand and high frequency
		03.05.16	06.00	03.05.16	09.30	Machine shutdown for planned mtc.
		03.05.16	09.30	13.06.16	15.00	Stopped due to low demand and high frequency
		13.06.16	15.00	16.06.16	17.15	Machine shut down for planned maintenance due to annual testing of generator transformer .
		16.06.16	17.15	26.06.16	15.20	Stopped due to low demand and high frequency

Unit	Capacity in MW	Outage		Synchronization		Reason of Outage
		Date	Time	Date	Time	
3	216	08.01.16	23.15	18.04.16	05.23	Stopped due to low demand and high frequency
		18.04.16	11.16	18.04.16	19.12	Unit tripped
		03.05.16	06.08	03.05.16	08.57	Machine shutdown for planned mtc.
		23.05.16	19.04	30.06.16	23.59	Stopped due to low demand and high frequency

Unit	Capacity in MW	Outage		Synchronization		Reason of Outage
		Date	Time	Date	Time	
4	216	08.01.16	23.15	03.05.16	06.00	Stopped due to low demand and high frequency
		03.05.16	06.00	03.05.16	09.30	Machine shutdown for planned mtc.
		03.05.16	09.30	27.05.16	01.12	Stopped due to low demand and high frequency
		30.05.16	11.16	30.06.16	23.59	

Unit	Capacity in MW	Outage		Synchronization		Reason of Outage
		Date	Time	Date	Time	
STG-2	254	28.03.16	00.00	30.04.16	23.59	Planned shutdown
		03.05.16	06.00	03.05.16	09.30	Machine shutdown for planned mtc.
		03.05.16	06.10	03.05.16	10.39	Machine shutdown for planned mtc.
		06.05.16	16.45	06.05.16	17.44	Unit tripped
		23.05.16	19.06	27.05.16	08.24	Stopped due to low demand and high frequency
		27.05.16	11.18	30.06.16	23.59	Stopped due to low demand and high frequency

**(F) RITHALA POWER STATION**

Unit	Capacity in MW	Outage		Synchronization		Reason of Outage
		Date	Time	Date	Time	
1	31.8	19.03.13	17:32	31.08.16	23.59	Stopped due to low demand and high frequency

Unit	Capacity in MW	Outage		Synchronization		Reason of Outage
		Date	Time	Date	Time	
2	31.8	07.06.13	22:41	31.08.16	23.59	Stopped due to low demand and high frequency

Unit	Capacity in MW	Outage		Synchronization		Reason of Outage
		Date	Time	Date	Time	
STG	31.8	07.06.13	22:38	31.08.16	23.59	Stopped due to low demand and high frequency

**ALLOCATION OF POWER TO DELHI**

A)

**Time block 00.00hrs. to 24.00hrs. @ 0% allocation from Unallocated Quota from 01.04.2016**

Name of the Stn	Installed capacity	Total Un-allocated	Basic Allocation	Basic Allocation at periphery	Allocation out of Unallocated Quota	Allocation out of Un-allocation Quota at Delhi periphery	Total allocation at Delhi periphery
1	2	3	4	5	6	7	(8)=(5)+(7)
<b><u>NTPC STATIONS</u></b>							
Singrauli STPS	2000	300	150	130	0	0	130
Rihand-I	1000	150	100	87	0	0	87
Rihand Stage -II	1000	150	126	109	0	0	109
Rihand Stage -III	1000	150	132	115	0	0	115
ANTA GPS	419	63	44	41	0	0	41
Auriya GPS	663.36	99	72	67	0	0	67
Dadri GPS	829.78	129	91	85	0	0	85
Dadri NCTPS (Th)	840	0	756	657	0	0	657
Dadri NCTPS (Th) Stage-II	980	147	735	639	0	0	639
Unchahaar-I TPS	420	20	24	21	0	0	21
Unchahaar-II TPS	420	63	47	41	0	0	41
Unchahaar-III TPS	210	31	29	25	0	0	25
Koldam HEP	800	120	56	53	0	0	53
<b>TOTAL</b>	<b>10582</b>	<b>1422</b>	<b>2362</b>	<b>2069</b>	<b>0</b>	<b>0</b>	<b>2069</b>
<b><u>NHPC</u></b>							
Baira Suil HPS	180	0	20	19	0	0	19
Salal HPS	690	0	80	76	0	0	76
Tanakpur HEP	94	0	12	11	0	0	11
Chamera HEP	540	0	43	41	0	0	41
Chamera-II HEP	300	54	40	38	0	0	38
Chamera-III HEP	231	35	29	28	0	0	28
URI-I HEP	480	0	53	50	0	0	50
URI-II HEP	240	0	32	31	0	0	31
Sewa HEP	120	18	16	15	0	0	15
Dhauri Ganga HEP	280	42	37	35	0	0	35
Dulhasti HEP	390	58	50	48	0	0	48
Parbati-III HEP	520	66	66	63	0	0	63
<b>TOTAL</b>	<b>4065</b>	<b>272</b>	<b>479</b>	<b>455</b>	<b>0</b>	<b>0</b>	<b>455</b>
<b><u>NPC</u></b>							
Narora APS	440	64	47	41	0	0	41
RAPP (C )	440	64	56	49	0	0	49
<b>TOTAL</b>	<b>880</b>	<b>128</b>	<b>103</b>	<b>89</b>	<b>0</b>	<b>0</b>	<b>89</b>
<b><u>SVJNL</u></b>							
Nathpa Jhakri HEP	1500	149	142	135	0	0	135
<b><u>THDC</u></b>							
Tehri Hydro	1000	99	63	60	0	0	60
Koteshwar HEP	400	40	39	37	0	0	37
<b>TOTAL</b>	<b>1400</b>	<b>139</b>	<b>102</b>	<b>97</b>	<b>0</b>	<b>0</b>	<b>97</b>
<b>Total</b>	<b>18427</b>	<b>2110</b>	<b>3188</b>	<b>2846</b>	<b>0</b>	<b>0</b>	<b>2846</b>
<b><u>Allocation from ER and Tala HEP</u></b>							
Farakka	1600	0	22	19	0	0	19
Kahalgaon	840	0	51	43	0	0	43
Talchar	1000	0	0	0	0	0	0
Tala HEP	1020	153	30	25	0	0	25
Kahalgaon-II	1500	0	157	131	0	0	131
<b>Total ER</b>	<b>5960</b>	<b>153</b>	<b>261</b>	<b>217</b>	<b>0</b>	<b>0</b>	<b>217</b>
<b><u>Joint Venture</u></b>							
Jhajjar TPS	1500	114	643	577	0	0	577
Ultra Mega Projects							
Sasan	3960	0	446	383	0	0	383
<b>Grand Total</b>	<b>29847</b>	<b>2377</b>	<b>4536</b>	<b>4023</b>	<b>0</b>	<b>0</b>	<b>4023</b>

**5 ALLOCATION OF POWER TO DISCOMS**

**A) ALLOCATION OF POWER TO VARIOUS LICENCEES AS PER ORDER OF DERC AND DECISION OF GNCTD FOR ALLOCATION OF CENTRAL SECTOR STATIONS (DADRI THERMAL & BTPS) AND STATE SECTOR GENERATING STATIONS w.e.f. 06.08.2013.**

**(Allocation In % )**

**(A) 10.00hrs. to 17.00hrs.**

SOURCES	LICENSEES					
	NDMC	MES	NDPL	BRPL	BYPL	TOTAL
1. Central Sector without Dadri (Th)	0	0	29.18	43.58	27.24	100.00
2. Dadri (Th)	16.63	0	24.22	36.86	22.39	100.00
3. BTPS	17.73	7.09	21.81	33.2	20.17	100.00
4. RPH	0	0	29.025	44.133	26.842	100.00
5. GT	0	0	29.02	44.16	26.82	100.00
6. Pragati	30.3	0	20.22	30.78	18.7	100.00
7. DVC	0	0	29.18	43.58	27.24	100.00
8. BAWANA CCGT*	7.30	1.82	20.688	30.888	19.304	80.00

**(B) 00.00hrs. to 10.00hrs. and 17.00hrs. to 24.00hrs.**

SOURCES	LICENSEES					
	NDMC	MES	NDPL	BRPL	BYPL	TOTAL
1. Central Sector without Dadri (Th)	0	0	29.18	43.58	27.24	100.00
2. Dadri (Th)	16.53	0	24.22	36.86	22.39	100.00
3. BTPS	17.73	7.09	21.81	33.2	20.17	100.00
4. RPH	0	0	29.025	44.133	26.842	100.00
5. GT	0	0	29.02	44.16	26.82	100.00
6. Pragati	30.3	0	20.22	30.78	18.7	100.00
7. DVC	0	0	29.18	43.58	27.24	100.00
8. BAWANA CCGT*	7.30	1.82	20.688	30.888	19.304	80.00

\* 20% POWER OF BAWANA CCGT ALLOCATED TO HARYANA (10%) & PUNJAB (10%)



**6 POWER AVAILABILITY-DEMAND POSITION AT THE TIME OF PEAK DEMAND MET DURING AUGUST 2016**

All figures in MW

Date	Time of peak demand	Generation within Delhi								Import from the Grid	Schedule from the Grid	OD(-) / UD(+)	Demand met	Shedding	Un-Restricted Demand
		RPH	GT	PPCL	Rithala	Bawana	Towmel	BTPS	Total						
(1)	(2)	(3)	(4)	(5)	(6)	(7)	(8)	(9)= (3) to (8)	(10)	(11)	(12)= (11) - (10)	(13)= (11)+ (12)	(14)	(15)= (13)+ (14)	
1	15.00.00	0	63	146	0	254	14	320	797	3729	3905	-176	4526	0	4526
2	15.21.00	0	37	145	0	254	14	320	770	4079	3841	238	4849	0	4849
3	23.00.30	0	43	262	0	252	11	331	899	4230	4094	136	5129	0	5129
4	23.02.09	0	70	262	0	251	7	324	914	4513	4438	75	5427	0	5427
5	15.30.47	0	65	262	0	296	16	347	986	4721	4618	103	5707	0	5707
6	00.00.19	0	81	291	0	274	16	345	1007	4373	4377	-4	5380	13	5393
7	23.16.53	0	72	145	0	307	15	326	865	4480	4431	49	5345	0	5345
8	23.00.00	0	74	263	0	252	8	323	920	4554	4578	-24	5474	0	5474
9	22.53.00	0	74	264	0	277	14	164	793	4546	4316	230	5339	0	5339
10	15.15.11	0	72	262	0	248	10	319	911	4397	4230	167	5308	6	5314
11	14.49.00	0	74	261	0	252	5	356	948	3867	3888	-21	4815	0	4815
12	12.03.52	0	72	261	0	253	16	324	926	3821	3695	126	4747	0	4747
13	23.00.48	0	72	152	0	255	16	323	818	3733	3675	58	4551	0	4551
14	00.00.26	0	72	151	0	255	16	324	818	3604	3616	-12	4422	0	4422
15	22.57.09	0	66	149	0	300	12	312	839	3974	3799	175	4813	0	4813
16	22.56.35	0	66	260	0	296	8	325	955	4324	4390	-66	5279	0	5279
17	00.01.38	0	66	262	0	254	14	328	924	4020	4044	-24	4944	30	4974
18	00.00.52	0	66	262	0	252	15	312	907	3729	2785	944	4636	0	4636
19	22.57.21	0	69	147	0	254	15	321	806	4416	4166	250	5222	0	5222
20	22.59.00	0	70	146	0	254	15	330	815	4227	4155	72	5042	0	5042
21	23.30.00	0	70	152	0	253	4	329	808	4168	4139	29	4976	0	4976
22	23.00.45	0	71	263	0	253	14	324	925	4321	4290	31	5246	0	5246
23	22.45.46	0	72	261	0	299	10	329	971	4322	4325	-3	5293	0	5293
24	00.00.00	0	72	263	0	278	6	326	945	4094	3968	126	5039	0	5039
25	00.00.24	0	73	264	0	253	16	322	928	3761	3741	20	4689	0	4689
26	15.26.10	0	70	262	0	253	12	321	918	4304	4228	76	5222	0	5222
27	23.00.00	0	70	263	0	253	9	325	920	4099	4141	-42	5019	0	5019
28	22.58.13	0	72	164	0	252	12	325	825	4365	4337	28	5190	0	5190
29	15.33.33	0	72	265	0	253	9	323	922	4237	4188	49	5159	0	5159
30	15.12.53	0	73	262	0	255	8	332	930	3869	3840	29	4799	0	4799
31	16.24.59	0	37	149	0	253	9	322	770	3609	3399	210	4379	0	4379

**POWER AVAILABILITY- DEMAND POSITION AT THE TIME OF MAXIMUM UNRESTRICTED DEMAND DURING AUGUST 2016**

Date	Time of peak demand	Generation within Delhi								Import from the Grid	Schedule from the Grid	OD(-) / UD(+)	Demand met	Shedding	Un-Restricted Demand
		RPH	GT	PPCL	Rithala	Bawana	Towmcl	BTPS	Total						
(1)	(2)	(3)	(4)	(5)	(6)	(7)	(8)		(9)= (3) to (8)	(10)	(11)	(12)= (11) - (10)	(13)= (11)+ (12)	(14)	(15)= (13)+ (14)
1	15.00.00	0	63	146	0	254	14	320	797	3729	3905	-176	4526	0	4526
2	15.21.00	0	37	145	0	254	14	320	770	4079	3841	238	4849	0	4849
3	23.00.30	0	43	262	0	252	11	331	899	4230	4094	136	5129	0	5129
4	23.02.09	0	70	262	0	251	7	324	914	4513	4438	75	5427	0	5427
5	15.30.47	0	65	262	0	296	16	347	986	4721	4618	103	5707	0	5707
6	00.00.19	0	81	291	0	274	16	345	1007	4373	4377	-4	5380	13	5393
7	23.16.53	0	72	145	0	307	15	326	865	4480	4431	49	5345	0	5345
8	23.00.00	0	74	263	0	252	8	323	920	4554	4578	-24	5474	0	5474
9	22.53.00	0	74	264	0	277	14	164	793	4546	4316	230	5339	0	5339
10	15.15.11	0	72	262	0	248	10	319	911	4397	4230	167	5308	6	5314
11	14.49.00	0	74	261	0	252	5	356	948	3867	3888	-21	4815	0	4815
12	12.03.52	0	72	261	0	253	16	324	926	3821	3695	126	4747	0	4747
13	23.00.48	0	72	152	0	255	16	323	818	3733	3675	58	4551	0	4551
14	00.00.26	0	72	151	0	255	16	324	818	3604	3616	-12	4422	0	4422
15	22.57.09	0	66	149	0	300	12	312	839	3974	3799	175	4813	0	4813
16	22.56.35	0	66	260	0	296	8	325	955	4324	4390	-66	5279	0	5279
17	00.01.38	0	66	262	0	254	14	328	924	4020	4044	-24	4944	30	4974
18	00.00.52	0	66	262	0	252	15	312	907	3729	2785	944	4636	0	4636
19	22.57.21	0	69	147	0	254	15	321	806	4416	4166	250	5222	0	5222
20	22.59.00	0	70	146	0	254	15	330	815	4227	4155	72	5042	0	5042
21	23.30.00	0	70	152	0	253	4	329	808	4168	4139	29	4976	0	4976
22	23.00.45	0	71	263	0	253	14	324	925	4321	4290	31	5246	0	5246
23	22.45.46	0	72	261	0	299	10	329	971	4322	4325	-3	5293	0	5293
24	00.00.00	0	72	263	0	278	6	326	945	4094	3968	126	5039	0	5039
25	00.00.24	0	73	264	0	253	16	322	928	3761	3741	20	4689	0	4689
26	15.26.10	0	70	262	0	253	12	321	918	4304	4228	76	5222	0	5222
27	23.00.00	0	70	263	0	253	9	325	920	4099	4141	-42	5019	0	5019
28	22.58.13	0	72	164	0	252	12	325	825	4365	4337	28	5190	0	5190
29	15.33.33	0	72	265	0	253	9	323	922	4237	4188	49	5159	0	5159
30	15.12.53	0	73	262	0	255	8	332	930	3869	3840	29	4799	0	4799
31	16.24.59	0	37	149	0	253	9	322	770	3609	3399	210	4379	0	4379

## SOURCEWISE SCHEDULED DRAWL FROM NORTHERN GRID AS WELL AS AVAILABILITY WITHIN DELHI FOR AUGUST 2016

### A) AVAILABILITY FROM GENCO AND PRAGATI STNs. (all fig in MUs)

A (i) RPH	0.000
(ii) GT+STG	51.743
(iii) PRAGATI	164.740
(iv) RITHALA	0.000
(v) BAWANA CCGT	194.552
(vi) Timarpur ó Okhla	10.994
TOTAL	422.029
B) AVAILABILITY FROM BTPS	237.686
C) AUXILIARY CONSUMPTION OF GENERATING STNs. EXCLUDING BTPS	14.867
D) NET GENERATION AVAILABLE WITHIN DELHI(A+B-C)	<b>644.848</b>

### B) SOURCE WISE SCHEDULED DRAWL FROM THE NORTHERN GRID

NAME OF THE STATION	AVAILABILITY AT POWER PLANT	AVAILABILITY AT DELHI PERIPHERY	ALLOCATION MADE BY NRLDC AT POWER PLANT	ALLOCATION MADE BY NRLDC AT DELHI PERIPHERY
B/SUIL	10.408	10.208	10.408	10.208
SALAL	53.369	52.349	53.369	52.349
SASAN	198.463	194.596	177.858	174.393
TANKAPUR	7.731	7.585	7.731	7.585
CHAMERA	31.589	30.982	31.589	30.982
CHAMERA -II	29.799	29.227	29.799	29.227
CHAMERA -III	21.476	21.064	21.476	21.064
DHAULGANGA	20.164	19.788	20.164	19.788
SEWA -2	10.012	9.819	7.469	7.325
URI	32.488	31.862	32.488	31.862
URI-II	20.887	20.483	20.887	20.483
KOLDAM	0.000	0.000	0.000	0.000
KOTESHWAR	21.886	21.462	21.886	21.462
PARBATI3	22.394	21.964	22.394	21.964
RAMPUR	0.000	0.000	0.000	0.000
MUNDRA_UMPP	0.000	0.000	0.000	0.000
ANTA (GAS)	16.444	16.122	8.845	8.676
ANTA (RLNG)	0.101	0.099	0.000	0.000
ANTA (LIQUID)	13.350	13.098	0.000	0.000
DADRI (GAS)	28.774	28.222	11.203	10.993
DADRI (RLNG)	1.098	1.072	0.000	0.000
DADRI (LIQUID)	30.648	30.060	0.000	0.000
AURAIYA (GAS)	13.317	13.060	9.210	9.036
AURAIYA (RLNG)	3.802	3.715	0.000	0.000
AURAIYA (LIQUID)	33.948	33.312	0.000	0.000
SINGRAULI	90.237	88.493	80.729	79.164
RIHAND -I	61.996	60.800	50.975	49.988
RIHAND -II	79.744	78.201	56.843	55.742
RIHAND -III	87.992	86.312	67.698	66.404
UNCHAAR-I	15.650	15.351	10.176	9.981
UNCHAAR-II	33.254	32.616	22.591	22.157
UNCHAAR-III	20.549	20.155	13.942	13.674
DADRI (TH)	537.244	526.932	135.012	132.450
DADRI (TH) STAGE-II	531.637	521.435	417.715	409.697
NAPP	30.041	29.463	30.041	29.463
RAPP 'B'	0.000	0.000	0.000	0.000
RAPP 'C'	38.114	37.382	38.114	37.382
NATHPA JHAKRI	97.198	95.345	72.509	71.127
DULASTI	35.420	34.742	35.420	34.742
TEHRI	38.669	37.922	38.669	37.922
JHAJJAR	478.310	469.169	233.666	229.198
KHELGAON	31.488	30.880	17.254	16.921
KHELGAON-II	109.662	107.560	69.305	67.974
FARAKA	14.852	14.567	8.058	7.903

NAME OF THE STATION	AVAILABILITY AT POWER PLANT	AVAILABILITY AT DELHI PERIPHERY	ALLOCATION MADE BY NRLDC AT POWER PLANT	ALLOCATION MADE BY NRLDC AT DELHI PERIPHERY
TALA	22.359	21.930	22.359	21.930
TALCHER	0.000	0.000	0.000	0.000
DVC	141.969	140.484	140.484	137.783
UTTAR PRADESH	1.107	1.091	1.091	1.070
TRIPUA	0.000	0.000	0.000	0.000
MEGHALAYA	0.077	0.076	0.076	0.075
UTTRANCHAL	0.000	0.000	0.000	0.000
DVC CTPS (BYPL)	0.000	0.000	0.000	0.000
DVC CTPS (NDPL)	0.000	0.000	0.000	0.000
METHON POWER(NDPL)LT-06	133.732	132.328	132.328	129.770
DVC MEJIA (LT-08)(BYPL)	68.513	67.796	67.796	66.498
URS	0.149	0.147	0.149	0.147
JAMMU & KASHMIR	289.341	287.456	287.456	281.936
HIMACHAL PRADESH	1.458	1.438	1.438	1.412
PUNJAB	0.000	0.000	0.000	0.000
MADHYA PRADESH	3.320	3.275	3.275	3.212
CHATTISHGARH	102.543	100.664	100.664	98.746
DVC LT-9	0.000	0.000	0.000	0.000
HARYANA (LT-05)	15.264	15.173	15.173	14.897
RAJASTHAN	0.000	0.000	0.000	0.000
ORISSA	150.913	149.334	149.334	146.470
RAJASTHAN(SOLAR) BRPL-LT36	3.945	3.870	3.870	3.796
RAJASTHAN(SOLAR) BYPL - LT-35	3.902	3.827	3.827	3.754
RAJASTHAN(SOLAR) TPDDL LT-31	3.827	3.754	3.754	3.682
TO JAMMU & KASHMIR	0.000	0.000	0.000	0.000
TO KARNATAKA	0.000	0.000	0.000	0.000
TO UTTAR PRADESH	-2.786	-2.838	-2.838	-2.890
TO MEGHALAYA	-0.039	-0.039	-0.039	-0.040
TO PUNJAB	-14.619	-14.749	-14.749	-15.032
TO CHATTISHGARH	0.000	0.000	0.000	0.000
TO UTTRANCHAL	0.000	0.000	0.000	0.000
TO KERALA	0.000	0.000	0.000	0.000
TO RAJASTHAN	0.000	0.000	0.000	0.000
TO WEST BENGAL	0.000	0.000	0.000	0.000
BTPS TO MP	0.000	0.000	0.000	0.000
TO HIMACHAL PRADESH	-0.233	-0.237	-0.237	-0.241
TO ORISSA	0.000	0.000	0.000	0.000
POWER EXCHANGE(IEX)	30.582	29.987	30.582	29.987
TO POWER EXCHANGE (IEX)	-183.002	-186.531	-183.002	-186.531
POWER EXCHANGE(PX)	0.000	0.000	0.000	0.000
TO POWER EXCHANGE (PX)	-0.189	-0.192	-0.189	-0.192
TO SHARE PROJECT (HARYANA)	-18.121	-18.475	-18.121	-18.475
TO SHARE PROJECT (PUNJAB)	-18.131	-18.485	-18.131	-18.485
<b>TOTAL</b>	<b>3690.086</b>	<b>3618.559</b>	<b>2611.844</b>	<b>2552.561</b>

### C) AGENCY WISE BREAKUP OF ENERGY SCHEDULED DRAW FROM THE GRID

NAME OF THE STATION	AVAILABILITY AT POWER PLANT	AVAILABILITY AT DELHI PERIPHERY	ALLOCATION MADE BY NRLDC AT POWER PLANT	ALLOCATION MADE BY NRLDC AT DELHI PERIPHERY
NTPC - NR	1599.784	1569.055	884.938	867.962
NTPC - ER	156.002	153.007	94.617	92.798
NHPC	295.738	290.073	293.194	287.578
NPC	68.155	66.845	68.155	66.845
SASAN	198.463	194.596	177.858	174.393
KOTESHWAR	21.886	21.462	21.886	21.462
MUNDRA_UMPP	0.000	0.000	0.000	0.000
NATHPA JHAKRI	97.198	95.345	72.509	71.127
TEHRI	38.669	37.922	38.669	37.922
TALA	22.359	21.930	22.359	21.930
JHAJJAR	478.310	469.169	233.666	229.198
TALCHER	0.000	0.000	0.000	0.000
RAJASTHAN SOLAR(BRPL)T-36	3.945	3.870	3.870	3.796
RAJASTHAN SOLAR(BYPL)T-35	3.902	3.827	3.827	3.754

NAME OF THE STATION	AVAILABILITY AT POWER PLANT	AVAILABILITY AT DELHI PERIPHERY	ALLOCATION MADE BY NRLDC AT POWER PLANT	ALLOCATION MADE BY NRLDC AT DELHI PERIPHERY
RAJASTHAN SOLAR(TPDDL)T-31	3.827	3.754	3.754	3.682
DVC	141.969	140.484	140.484	137.783
UTTAR PRADESH	1.107	1.091	1.091	1.070
TRIPURA	0.000	0.000	0.000	0.000
MEGHALAYA	0.077	0.076	0.076	0.075
UTTRANCHAL	0.000	0.000	0.000	0.000
DVC CTPS (BYPL)	0.000	0.000	0.000	0.000
DVC CTPS (NDPL)	0.000	0.000	0.000	0.000
METHON POWER (NDPL)-LT-06	133.732	132.328	132.328	129.770
DVC MEJIA (LT-08)(BYPL)	68.513	67.796	67.796	66.498
URS	0.149	0.147	0.149	0.147
JAMMU & KASHMIR	289.341	287.456	287.456	281.936
HIMACHAL PRADESH	1.458	1.438	1.438	1.412
PUNJAB	0.000	0.000	0.000	0.000
MADHYA PRADESH	3.320	3.275	3.275	3.212
CHATTISHGARH	102.543	100.664	100.664	98.746
DVC (FOR NDPL) LT-09	0.000	0.000	0.000	0.000
HARYANA (LT -05)	15.264	15.173	15.173	14.897
RAJASTHAN	0.000	0.000	0.000	0.000
ORISSA	150.913	149.334	149.334	146.470
POWER EXCHANGE(IEX)	30.582	29.987	30.582	29.987
POWER EXCHANGE(PX)	0.000	0.000	0.000	0.000
<b>TOTAL</b>	<b>3927.206</b>	<b>3896.106</b>	<b>2849.150</b>	<b>2794.448</b>

**D) AGENCY WISE BREAKUP OF ENERGY SCHEDULED BY NRLDC FOR EXPORT TO OTHER UTILITIES FROM DTL**

NAME OF THE STATION	AVAILABILITY AT POWER PLANT	AVAILABILITY AT PERIPHERY	ALLOCATION MADE BY NRLDC AT POWER PLANT	ALLOCATION MADE BY NRLDC AT POWER PERIPHERY
TO JAMMU & KASHMIR	0.000	0.000	0.000	0.000
TO KARNATAKA	0.000	0.000	0.000	0.000
TO UTTAR PRADESH	-2.786	-2.838	-2.838	-2.890
TO MEGHALAYA	-0.039	-0.039	-0.039	-0.040
TO CHATTISHGARH	0.000	0.000	0.000	0.000
TO PUNJAB	-14.619	-14.749	-14.749	-15.032
TO UTTRANCHAL	0.000	0.000	0.000	0.000
TO KERALA	0.000	0.000	0.000	0.000
TO RAJASTHAN	0.000	0.000	0.000	0.000
TO WEST BENGAL	0.000	0.000	0.000	0.000
BTPS TO MP	0.000	0.000	0.000	0.000
TO HIMACHAL PRADESH	-0.233	-0.237	-0.237	-0.241
TO ORISSA	0.000	0.000	0.000	0.000
TO POWER EXCHANGE (IEX)	-183.002	-186.531	-183.002	-186.531
TO POWER EXCHANGE (PX)	-0.189	-0.192	-0.189	-0.192
TO SHARE PROJECT (HARYANA)	-18.121	-18.475	-18.121	-18.475
TO SHARE PROJECT (PUNJAB)	-18.131	-18.485	-18.131	-18.485
<b>TOTAL</b>	<b>-237.119</b>	<b>-241.547</b>	<b>-237.306</b>	<b>-241.887</b>
<b>TOTAL SCHEDULED DRAWAL FROM THE GRID</b>	<b>3690.086</b>	<b>3618.559</b>	<b>2611.844</b>	<b>2552.561</b>

TOTAL CONSUMPTION INCLUDING AUX. OF GENERATING STNs. EXCLUDING BTPS		3222.104
NET CONSUMPTION		<b>3207.237</b>
AVAILABILITY WITHIN DELHI		644.848
ACTUAL DRAWAL FROM THE GRID		2562.389
OVER DRAWAL(+)/UNDER DRAWAL(-) FROM THE GRID ON THE BASIS OF SCHEDULED ALLOCATION MADE BY NRLDC TO DELHI AT PERIPHERY		9.828
LOAD SHEDDING		3.228
UNRESTRICTED DEMAND (GROSS)		3225.332
UNRESTRICTED DEMAND (NET)		3210.465
MAX. NET CONSUMPTION		117.129 ON 05.08.2016
MAX. LOAD SHEDDING		830MW ON 04.07.2016 AT 12.24HRS.
<b>PEAK LOAD</b>	Peak Demand during the month	SHEDDING AT PEAK TIME
DAY PEAK	5707MW AT 15.30.47HRS ON 05.08.2016	0 MW
EVENING PEAK	5531MW AT 23.00HRS ON 05.08.2016	116 MW
P.L.F. OF GENCO AND PRAGATI STNs.	RPH	0.00%
	GT	25.76%
	PRAGATI	67.10%
	RITHALA	0.00%
	BAWANA	19.07%
	Timarpur Okhla	92.36%

DATE	No. of Under Freq. Relay Operated	Shedding due to under frequency relay operation in MUs					Shedding due to Grid Restrictions (Over drawal / low freq.)				
		BSES		NDPL	NDMC	TOTAL	BSES		NDPL	NDMC	MES
		BYPL	BRPL				BYPL	BRPL			
1	2	3	4	5	6	7=3 to 6	8	9	10	11	12
01.Aug.16	0	0.000	0.000	0.000	0.000	<b>0.000</b>	0.000	0.000	0.000	0.000	0.000
02.Aug.16	0	0.000	0.000	0.000	0.000	<b>0.000</b>	0.000	0.000	0.000	0.000	0.000
03.Aug.16	0	0.000	0.000	0.000	0.000	<b>0.000</b>	0.000	0.000	0.000	0.000	0.000
04.Aug.16	0	0.000	0.000	0.000	0.000	<b>0.000</b>	0.000	0.000	0.000	0.000	0.000
05.Aug.16	0	0.000	0.000	0.000	0.000	<b>0.000</b>	0.040	0.153	0.124	0.000	0.000
06.Aug.16	0	0.000	0.000	0.000	0.000	<b>0.000</b>	0.000	0.052	0.000	0.000	0.000
07.Aug.16	0	0.000	0.000	0.000	0.000	<b>0.000</b>	0.000	0.000	0.000	0.000	0.000
08.Aug.16	0	0.000	0.000	0.000	0.000	<b>0.000</b>	0.000	0.000	0.003	0.000	0.000
09.Aug.16	0	0.000	0.000	0.000	0.000	<b>0.000</b>	0.000	0.109	0.000	0.000	0.000
10.Aug.16	0	0.000	0.000	0.000	0.000	<b>0.000</b>	0.000	0.000	0.000	0.000	0.000
11.Aug.16	0	0.000	0.000	0.000	0.000	<b>0.000</b>	0.000	0.000	0.000	0.000	0.000
12.Aug.16	0	0.000	0.000	0.000	0.000	<b>0.000</b>	0.000	0.000	0.000	0.000	0.000
13.Aug.16	0	0.000	0.000	0.000	0.000	<b>0.000</b>	0.000	0.039	0.000	0.000	0.000
14.Aug.16	0	0.000	0.000	0.000	0.000	<b>0.000</b>	0.000	0.000	0.000	0.000	0.000
15.Aug.16	0	0.000	0.000	0.000	0.000	<b>0.000</b>	0.000	0.000	0.000	0.000	0.000
16.Aug.16	0	0.000	0.000	0.000	0.000	<b>0.000</b>	0.000	0.004	0.000	0.000	0.000
17.Aug.16	0	0.000	0.000	0.000	0.000	<b>0.000</b>	0.000	0.000	0.000	0.000	0.000
18.Aug.16	0	0.000	0.000	0.000	0.000	<b>0.000</b>	0.000	0.000	0.000	0.000	0.000
19.Aug.16	0	0.000	0.000	0.000	0.000	<b>0.000</b>	0.000	0.063	0.000	0.000	0.000
20.Aug.16	0	0.000	0.000	0.000	0.000	<b>0.000</b>	0.000	0.000	0.000	0.000	0.000
21.Aug.16	0	0.000	0.000	0.000	0.000	<b>0.000</b>	0.000	0.000	0.000	0.000	0.000
22.Aug.16	0	0.000	0.000	0.000	0.000	<b>0.000</b>	0.000	0.000	0.000	0.000	0.000
23.Aug.16	0	0.000	0.000	0.000	0.000	<b>0.000</b>	0.000	0.000	0.000	0.000	0.000
24.Aug.16	0	0.000	0.000	0.000	0.000	<b>0.000</b>	0.000	0.107	0.000	0.000	0.000
25.Aug.16	0	0.000	0.000	0.000	0.000	<b>0.000</b>	0.000	0.000	0.000	0.000	0.000
26.Aug.16	0	0.000	0.000	0.000	0.000	<b>0.000</b>	0.000	0.000	0.000	0.000	0.000
27.Aug.16	0	0.000	0.000	0.000	0.000	<b>0.000</b>	0.000	0.000	0.000	0.000	0.000
28.Aug.16	0	0.000	0.000	0.000	0.000	<b>0.000</b>	0.000	0.000	0.000	0.000	0.000
29.Aug.16	0	0.000	0.000	0.000	0.000	<b>0.000</b>	0.000	0.000	0.000	0.000	0.000
30.Aug.16	0	0.000	0.000	0.000	0.000	<b>0.000</b>	0.000	0.000	0.000	0.000	0.000
31.Aug.16	0	0.000	0.000	0.000	0.000	<b>0.000</b>	0.000	0.000	0.000	0.000	0.000
<b>TOTAL</b>	<b>0</b>	<b>0.000</b>	<b>0.000</b>	<b>0.000</b>	<b>0.000</b>	<b>0.000</b>	<b>0.040</b>	<b>0.527</b>	<b>0.127</b>	<b>0.000</b>	<b>0.000</b>

Date	Shedding due to Transmission/Grid Constraints in Central Sector Stations / TTC / ATC VOILATION				DUE TO NEW GRID CODE REGULATION DEVIATION			Shedding due to Transmission/Grid Constraints in Central sector stations				Total	Total shedding due to grid restrictions
	BSES		NDPL	NDMC	BSES		TPDDL	BSES		TPDDL	NDMC		
	BYPL	BRPL			BYPL	BRPL		BYPL	BRPL				
	13	14	15	16	17	18	19	20	21	22	23	24=8 to 23	25=7+24
01.Aug.16	0.000	0.000	0.000	0.000	0.000	0.000	0.000	0.000	0.000	0.000	0.000	0.000	0.000
02.Aug.16	0.000	0.000	0.000	0.000	0.000	0.000	0.000	0.000	0.000	0.000	0.000	0.000	0.000
03.Aug.16	0.000	0.000	0.000	0.000	0.000	0.000	0.000	0.000	0.000	0.000	0.000	0.000	0.000
04.Aug.16	0.000	0.000	0.000	0.000	0.000	0.000	0.000	0.000	0.000	0.000	0.000	0.000	0.000
05.Aug.16	0.000	0.000	0.000	0.000	0.000	0.000	0.000	0.000	0.000	0.000	0.000	0.317	0.317
06.Aug.16	0.000	0.000	0.000	0.000	0.000	0.000	0.000	0.000	0.000	0.000	0.000	0.052	0.052
07.Aug.16	0.000	0.000	0.000	0.000	0.000	0.000	0.000	0.000	0.000	0.000	0.000	0.000	0.000
08.Aug.16	0.000	0.000	0.000	0.000	0.000	0.000	0.000	0.000	0.000	0.000	0.000	0.003	0.003
09.Aug.16	0.000	0.000	0.000	0.000	0.000	0.000	0.000	0.000	0.000	0.000	0.000	0.109	0.109
10.Aug.16	0.000	0.000	0.000	0.000	0.000	0.000	0.000	0.000	0.000	0.000	0.000	0.000	0.000
11.Aug.16	0.000	0.000	0.000	0.000	0.000	0.000	0.000	0.000	0.000	0.000	0.000	0.000	0.000
12.Aug.16	0.000	0.000	0.000	0.000	0.000	0.000	0.000	0.000	0.000	0.000	0.000	0.000	0.000
13.Aug.16	0.000	0.000	0.000	0.000	0.000	0.000	0.000	0.000	0.000	0.000	0.000	0.039	0.039
14.Aug.16	0.000	0.000	0.000	0.000	0.000	0.000	0.000	0.000	0.000	0.000	0.000	0.000	0.000
15.Aug.16	0.000	0.000	0.000	0.000	0.000	0.000	0.000	0.000	0.000	0.000	0.000	0.000	0.000
16.Aug.16	0.000	0.000	0.000	0.000	0.000	0.000	0.000	0.000	0.000	0.000	0.000	0.004	0.004
17.Aug.16	0.000	0.000	0.000	0.000	0.000	0.000	0.000	0.000	0.000	0.000	0.000	0.000	0.000
18.Aug.16	0.000	0.000	0.000	0.000	0.000	0.000	0.000	0.000	0.000	0.000	0.000	0.000	0.000
19.Aug.16	0.000	0.000	0.000	0.000	0.000	0.000	0.000	0.000	0.000	0.000	0.000	0.063	0.063
20.Aug.16	0.000	0.000	0.000	0.000	0.000	0.000	0.000	0.000	0.000	0.000	0.000	0.000	0.000
21.Aug.16	0.000	0.000	0.000	0.000	0.000	0.000	0.000	0.000	0.000	0.000	0.000	0.000	0.000
22.Aug.16	0.000	0.000	0.000	0.000	0.000	0.000	0.000	0.000	0.000	0.000	0.000	0.000	0.000
23.Aug.16	0.000	0.000	0.000	0.000	0.000	0.000	0.000	0.000	0.000	0.000	0.000	0.000	0.000
24.Aug.16	0.000	0.000	0.000	0.000	0.000	0.000	0.000	0.000	0.000	0.000	0.000	0.107	0.107
25.Aug.16	0.000	0.000	0.000	0.000	0.000	0.000	0.000	0.000	0.000	0.000	0.000	0.000	0.000
26.Aug.16	0.000	0.000	0.000	0.000	0.000	0.000	0.000	0.000	0.000	0.000	0.000	0.000	0.000
27.Aug.16	0.000	0.000	0.000	0.000	0.000	0.000	0.000	0.000	0.000	0.000	0.000	0.000	0.000
28.Aug.16	0.000	0.000	0.000	0.000	0.000	0.000	0.000	0.000	0.000	0.000	0.000	0.000	0.000
29.Aug.16	0.000	0.000	0.000	0.000	0.000	0.000	0.000	0.000	0.000	0.000	0.000	0.000	0.000
30.Aug.16	0.000	0.000	0.000	0.000	0.000	0.000	0.000	0.000	0.000	0.000	0.000	0.000	0.000
31.Aug.16	0.000	0.000	0.000	0.000	0.000	0.000	0.000	0.000	0.000	0.000	0.000	0.000	0.000
<b>TOTAL</b>	<b>0.000</b>	<b>0.000</b>	<b>0.000</b>	<b>0.000</b>	<b>0.000</b>	<b>0.000</b>	<b>0.000</b>	<b>0.000</b>	<b>0.000</b>	<b>0.000</b>	<b>0.000</b>	<b>0.694</b>	<b>0.694</b>



Date	DUE TO T&D CONSTRAINTS IN DELHI SYSTEM								
	DTL					DISCOMS			
	BSES		NDPL	NDMC	MES	BSES		NDPL	NDMC
	BYPL	BRPL				BYPL	BRPL		
26	27	28	29	30	31	32	33	34	
01.Aug.16	0.001	0.010	0.000	0.000	0.000	0.000	0.004	0.000	0.000
02.Aug.16	0.000	0.000	0.000	0.000	0.000	0.019	0.008	0.000	0.000
03.Aug.16	0.000	0.040	0.000	0.000	0.000	0.003	0.019	0.002	0.000
04.Aug.16	0.000	0.778	0.096	0.000	0.000	0.000	0.055	0.001	0.000
05.Aug.16	0.000	0.174	0.034	0.000	0.000	0.013	0.088	0.000	0.000
06.Aug.16	0.001	0.000	0.013	0.000	0.000	0.000	0.078	0.000	0.000
07.Aug.16	0.000	0.000	0.000	0.000	0.000	0.005	0.001	0.000	0.000
08.Aug.16	0.002	0.000	0.007	0.000	0.000	0.000	0.024	0.001	0.000
09.Aug.16	0.000	0.005	0.000	0.000	0.000	0.000	0.010	0.005	0.000
10.Aug.16	0.000	0.000	0.000	0.000	0.000	0.010	0.000	0.015	0.000
11.Aug.16	0.000	0.000	0.000	0.000	0.000	0.003	0.004	0.005	0.000
12.Aug.16	0.000	0.003	0.000	0.000	0.000	0.005	0.010	0.001	0.000
13.Aug.16	0.000	0.000	0.000	0.000	0.000	0.008	0.091	0.020	0.000
14.Aug.16	0.000	0.000	0.000	0.000	0.000	0.000	0.033	0.024	0.000
15.Aug.16	0.014	0.021	0.002	0.000	0.000	0.000	0.005	0.088	0.001
16.Aug.16	0.000	0.000	0.000	0.000	0.000	0.011	0.071	0.007	0.000
17.Aug.16	0.000	0.000	0.000	0.000	0.000	0.000	0.089	0.000	0.000
18.Aug.16	0.000	0.000	0.000	0.000	0.000	0.000	0.001	0.000	0.000
19.Aug.16	0.003	0.015	0.031	0.000	0.000	0.003	0.006	0.000	0.000
20.Aug.16	0.000	0.000	0.000	0.000	0.000	0.000	0.006	0.000	0.000
21.Aug.16	0.000	0.000	0.000	0.000	0.000	0.001	0.003	0.000	0.000
22.Aug.16	0.000	0.000	0.000	0.000	0.000	0.001	0.000	0.014	0.000
23.Aug.16	0.010	0.058	0.003	0.000	0.000	0.000	0.000	0.003	0.000
24.Aug.16	0.000	0.000	0.012	0.000	0.000	0.002	0.000	0.021	0.000
25.Aug.16	0.000	0.000	0.000	0.000	0.000	0.000	0.000	0.000	0.000
26.Aug.16	0.000	0.006	0.000	0.000	0.000	0.000	0.009	0.006	0.003
27.Aug.16	0.000	0.000	0.000	0.000	0.000	0.000	0.010	0.000	0.000
28.Aug.16	0.007	0.000	0.000	0.000	0.000	0.000	0.000	0.000	0.000
29.Aug.16	0.000	0.007	0.008	0.000	0.000	0.000	0.012	0.012	0.000
30.Aug.16	0.000	0.000	0.000	0.000	0.000	0.000	0.000	0.115	0.000
31.Aug.16	0.007	0.000	0.000	0.000	0.000	0.000	0.017	0.035	0.005
<b>TOTAL</b>	<b>0.045</b>	<b>1.117</b>	<b>0.206</b>	<b>0.000</b>	<b>0.000</b>	<b>0.084</b>	<b>0.654</b>	<b>0.375</b>	<b>0.009</b>

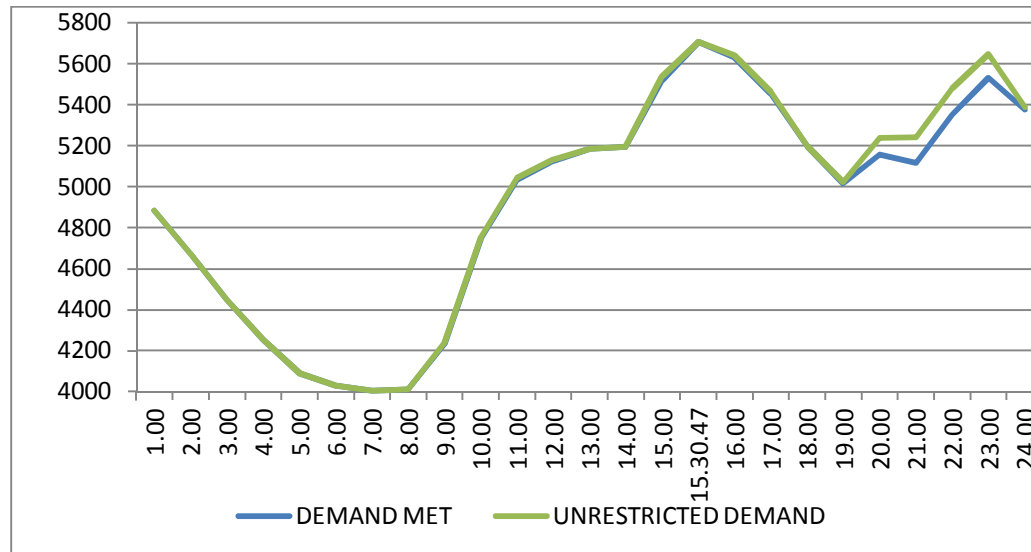
DATE	OTHER AGENCIES LIKE GENCO, BBMB, BTPS ETC.				THEFT PRONE SHEDDING			TOTAL SHEDDING DUE TO T&D CONSTS. & THEFT PRONE	GRAND TOTAL
	BSES		NDPL	NDMC	BSES		NDPL		
	BYPL	BRPL			BYPL	BRPL			
1	35	36	37	38	39	40	41	42= 26 to 41	43 = 25 + 42
01.Aug.16	0.000	0.000	0.000	0.000	0.000	0.000	0.000	0.015	0.015
02.Aug.16	0.000	0.000	0.000	0.000	0.000	0.000	0.000	0.027	0.027
03.Aug.16	0.000	0.000	0.000	0.000	0.000	0.000	0.000	0.064	0.064
04.Aug.16	0.000	0.000	0.000	0.000	0.000	0.000	0.000	0.930	0.930
05.Aug.16	0.000	0.000	0.000	0.000	0.000	0.000	0.000	0.309	0.626
06.Aug.16	0.000	0.000	0.000	0.000	0.000	0.000	0.000	0.092	0.144
07.Aug.16	0.000	0.000	0.000	0.000	0.000	0.000	0.000	0.006	0.006
08.Aug.16	0.000	0.000	0.000	0.000	0.000	0.000	0.002	0.036	0.039
09.Aug.16	0.000	0.000	0.000	0.000	0.000	0.000	0.000	0.020	0.129
10.Aug.16	0.000	0.000	0.000	0.000	0.000	0.000	0.001	0.026	0.026
11.Aug.16	0.000	0.000	0.000	0.000	0.000	0.000	0.001	0.013	0.013
12.Aug.16	0.000	0.000	0.002	0.000	0.000	0.000	0.000	0.021	0.021
13.Aug.16	0.000	0.000	0.000	0.000	0.000	0.000	0.000	0.119	0.158
14.Aug.16	0.000	0.000	0.000	0.000	0.000	0.000	0.000	0.057	0.057
15.Aug.16	0.000	0.000	0.000	0.000	0.000	0.000	0.000	0.131	0.131
16.Aug.16	0.000	0.000	0.000	0.000	0.000	0.000	0.006	0.095	0.099
17.Aug.16	0.000	0.000	0.000	0.000	0.000	0.000	0.000	0.089	0.089
18.Aug.16	0.000	0.000	0.000	0.000	0.000	0.000	0.000	0.001	0.001
19.Aug.16	0.000	0.000	0.000	0.000	0.000	0.000	0.023	0.081	0.144
20.Aug.16	0.000	0.000	0.000	0.000	0.000	0.000	0.000	0.006	0.006
21.Aug.16	0.000	0.000	0.000	0.000	0.000	0.000	0.000	0.004	0.004
22.Aug.16	0.000	0.000	0.000	0.000	0.000	0.000	0.000	0.015	0.015
23.Aug.16	0.000	0.000	0.000	0.000	0.000	0.000	0.000	0.074	0.074
24.Aug.16	0.000	0.000	0.000	0.000	0.000	0.000	0.004	0.039	0.146
25.Aug.16	0.000	0.000	0.000	0.000	0.000	0.000	0.000	0.000	0.000
26.Aug.16	0.000	0.000	0.000	0.000	0.000	0.000	0.000	0.024	0.024
27.Aug.16	0.000	0.000	0.000	0.000	0.000	0.000	0.000	0.010	0.010
28.Aug.16	0.000	0.000	0.000	0.000	0.000	0.000	0.004	0.011	0.011
29.Aug.16	0.000	0.000	0.001	0.000	0.000	0.000	0.000	0.040	0.040
30.Aug.16	0.000	0.000	0.000	0.000	0.000	0.000	0.000	0.115	0.115
31.Aug.16	0.000	0.000	0.000	0.000	0.000	0.000	0.000	0.064	0.064
<b>TOTAL</b>	<b>0.000</b>	<b>0.000</b>	<b>0.003</b>	<b>0.000</b>	<b>0.000</b>	<b>0.000</b>	<b>0.041</b>	<b>2.534</b>	<b>3.228</b>

DATE	(NET CONS.)	MAXI. DEMAND MET DURING THE DAY	TIME OF OCCURRENCE OF MAX DEMAND	SHEDDING AT THIS TIME	UN-RESTRICTED DEMAND	MAXIMUM UN-RESTRICTED DEMAND DURING THE DAY	TIME OF MAX. UN-REST. DEMAND	DEMAND AT THAT TIME	SHEDDING AT THAT TIME
	In Mus.	IN MW	IN HRS.	IN MW	IN MW	IN MW	HRS.	IN MW	IN MW
<b>1</b>	<b>32</b>	<b>33</b>	<b>34</b>	<b>35</b>	<b>36=33+35</b>	<b>37=39+40</b>	<b>38</b>	<b>39</b>	<b>40</b>
01.Aug.16	94.950	4526	15:00	0	4526	4526	15:00	4526	0
02.Aug.16	97.017	4849	15:21	0	4849	4849	15:21	4849	0
03.Aug.16	103.549	5129	23:00:30	0	5129	5129	23:00:30	5129	0
04.Aug.16	110.542	5427	23:02:09	0	5427	5440	13:30	5375	65
05.Aug.16	117.129	5707	15:30:47	0	5707	5707	15:30:47	5707	0
06.Aug.16	107.783	5380	00:00:19	13	5393	5393	00:00:19	5380	13
07.Aug.16	102.658	5345	23:16:53	0	5345	5345	23:16:53	5345	0
08.Aug.16	114.007	5474	23:00	0	5474	5474	23:00	5474	0
09.Aug.16	113.767	5339	22:53	0	5339	5339	22:53	5339	0
10.Aug.16	110.246	5308	15:15:11	6	5314	5314	15:15:11	5308	6
11.Aug.16	103.618	4815	14:49	0	4815	4815	14:49	4815	0
12.Aug.16	99.972	4747	12:03:52	0	4747	4747	12:03:52	4747	0
13.Aug.16	96.799	4551	23:00:48	0	4551	4551	23:00:48	4551	0
14.Aug.16	89.943	4422	00:00:26	0	4422	4422	00:00:26	4422	0
15.Aug.16	85.767	4813	22:57:09	0	4813	4813	22:57:09	4813	0
16.Aug.16	105.207	5279	22:56:35	0	5279	5279	22:56:35	5279	0
17.Aug.16	104.904	4944	00:01:38	30	4974	4974	00:01:38	4944	30
18.Aug.16	96.110	4636	00:00:52	0	4636	4636	00:00:52	4636	0
19.Aug.16	104.288	5225	22:57:21	0	5225	5225	22:57:21	5225	0
20.Aug.16	106.168	5042	22:59	0	5042	5042	22:59	5042	0
21.Aug.16	101.047	4986	23:30	0	4986	4986	23:30	4986	0
22.Aug.16	107.503	5246	23:00:45	0	5246	5246	23:00:45	5246	0
23.Aug.16	110.741	5293	22:45:46	0	5293	5293	22:45:46	5293	0
24.Aug.16	105.932	5039	00:00	0	5039	5039	00:00	5039	0
25.Aug.16	100.156	4689	00:00:24	0	4689	4689	00:00:24	4689	0
26.Aug.16	107.972	5222	15:26:10	0	5222	5222	15:26:10	5222	0
27.Aug.16	103.590	5021	23:00	0	5021	5021	23:00	5021	0
28.Aug.16	104.407	5190	22:58:13	0	5190	5190	22:58:13	5190	0
29.Aug.16	104.031	5159	15:33:33	0	5159	5159	15:33:33	5159	0
30.Aug.16	102.980	4799	15:12:53	0	4799	4799	15:12:53	4799	0
31.Aug.16	94.454	4379	16:24:59	0	4379	4379	16:24:59	4379	0
<b>TOTAL</b>	<b>3207.237</b>	<b>5707</b> <b>05.08.16</b>	15:30:47	0	<b>5707</b> <b>05.08.16</b>	<b>5707</b>	15:30:47	<b>5707</b>	0

**LOAD PATTERN OF DELHI ON THE DAY OF PEAK DEMAND MET DURING AUGUST 2016 ON 05.08.2016- 5707MW AT 15.30.47HRS.**

All figures in MW

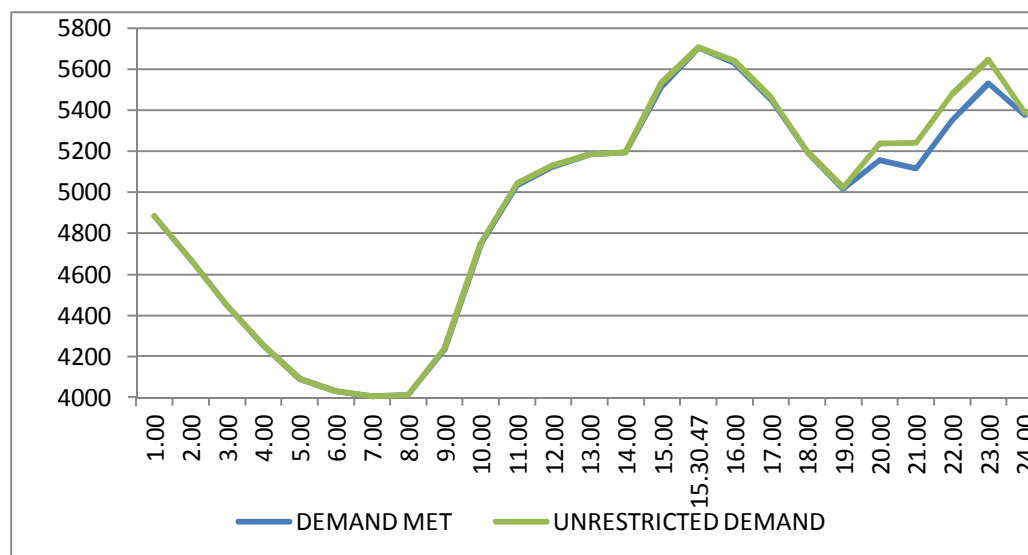
Hrs.	Demand	Load Shedding	Un-Restricted Demand
1.00	4883	0	4883
2.00	4671	0	4671
3.00	4449		4449
4.00	4253	0	4253
5.00	4091	0	4091
6.00	4032	0	4032
7.00	4005	0	4005
8.00	4013	0	4013
9.00	4234	7	4241
10.00	4747	7	4754
11.00	5033	10	5043
12.00	5125	7	5132
13.00	5185	0	5185
14.00	5195	0	5195
15.00	5520	17	5537
15.30.47	5707	0	5707
16.00	5631	10	5641
17.00	5452	10	5462
18.00	5199	0	5199
19.00	5018	4	5022
20.00	5157	82	5239
21.00	5116	126	5242
22.00	5351	127	5478
23.00	5531	116	5647
24.00	5375	13	5388
<b>Total (IN MUS)</b>	<b>117.129</b>	<b>0.930</b>	<b>118.059</b>



**11 LOAD PATTERN OF DELHI ON THE DAY OF MAXIMUM UN-RESTRICTED DEMAND DURING AUGUST 2016 ON 05.08.2016- 5707MW AT 15.30.47HRS.**

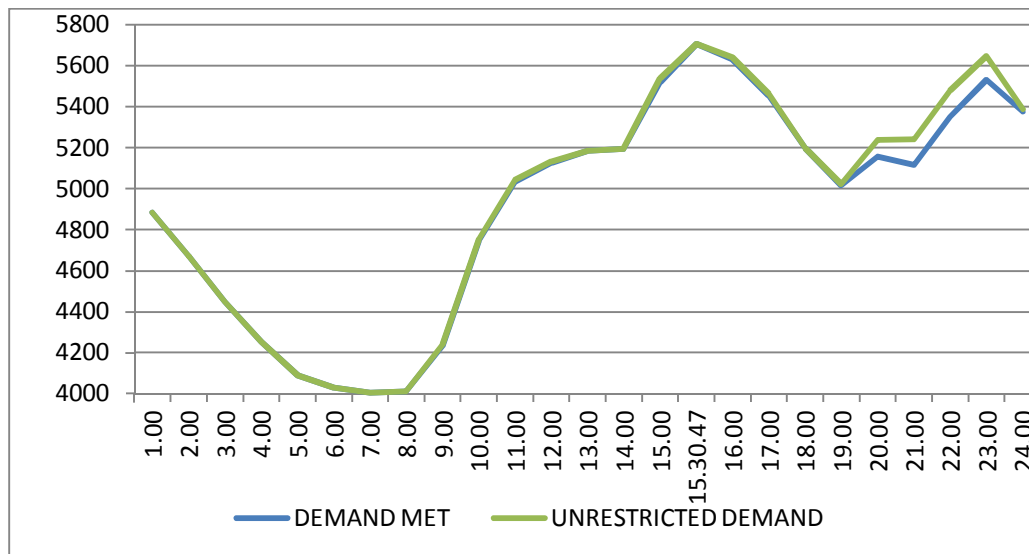
All figures in MW

Hrs.	Demand	Load Shedding	Un-Restricted Demand
1.00	4883	0	4883
2.00	4671	0	4671
3.00	4449		4449
4.00	4253	0	4253
5.00	4091	0	4091
6.00	4032	0	4032
7.00	4005	0	4005
8.00	4013	0	4013
9.00	4234	7	4241
10.00	4747	7	4754
11.00	5033	10	5043
12.00	5125	7	5132
13.00	5185	0	5185
14.00	5195	0	5195
15.00	5520	17	5537
15.30.47	5707	0	5707
16.00	5631	10	5641
17.00	5452	10	5462
18.00	5199	0	5199
19.00	5018	4	5022
20.00	5157	82	5239
21.00	5116	126	5242
22.00	5351	127	5478
23.00	5531	116	5647
24.00	5375	13	5388
<b>Total (IN MUS)</b>	<b>117.129</b>	<b>0.930</b>	<b>118.059</b>



**12 LOAD PATTERN OF DELHI ON THE DAY OF MAXIMUM ENERGY CONSUMED DURING AUGUST 2016 – 05.08.2016 – 117.129Mus All figures in MW**

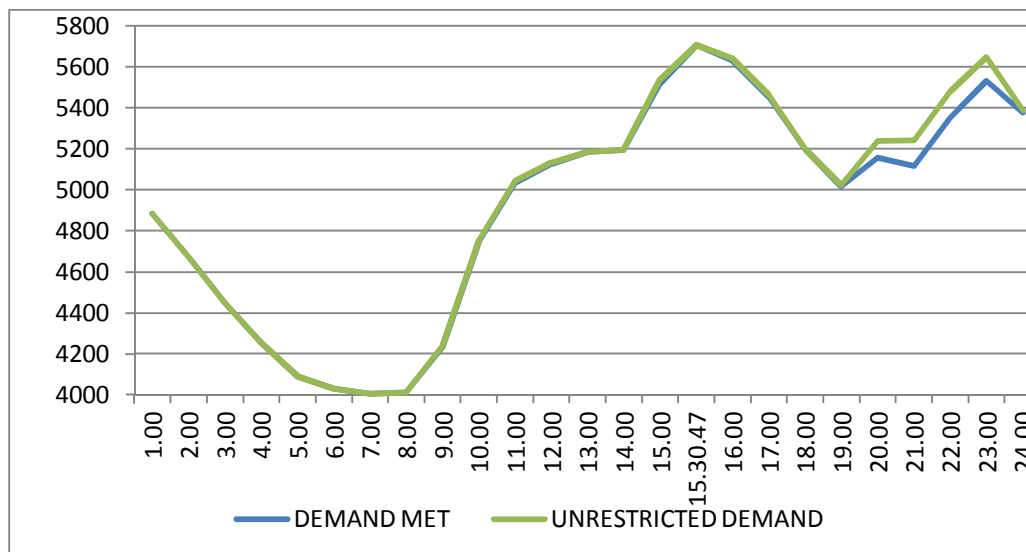
Hrs.	Demand	Load Shedding	Un-Restricted Demand
1.00	4883	0	4883
2.00	4671	0	4671
3.00	4449		4449
4.00	4253	0	4253
5.00	4091	0	4091
6.00	4032	0	4032
7.00	4005	0	4005
8.00	4013	0	4013
9.00	4234	7	4241
10.00	4747	7	4754
11.00	5033	10	5043
12.00	5125	7	5132
13.00	5185	0	5185
14.00	5195	0	5195
15.00	5520	17	5537
15.30.47	5707	0	5707
16.00	5631	10	5641
17.00	5452	10	5462
18.00	5199	0	5199
19.00	5018	4	5022
20.00	5157	82	5239
21.00	5116	126	5242
22.00	5351	127	5478
23.00	5531	116	5647
24.00	5375	13	5388
<b>Total (IN MUS)</b>	<b>117.129</b>	<b>0.930</b>	<b>118.059</b>



**13 LOAD PATTERN OF DELHI ON THE DAY OF MAXIMUM UNRESTRICTED ENERGY DEMAND DURING AUGUST 2016 – 05.08.2016 – 117.775 Mus**

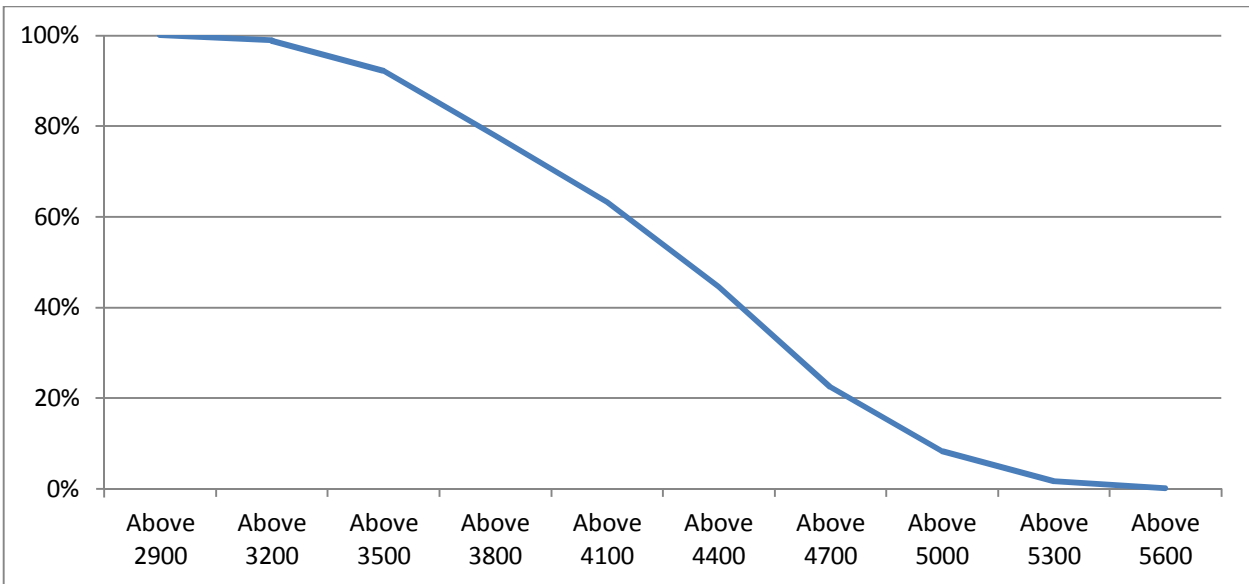
All figures in MW

Hrs.	Demand	Load Shedding	Un-Restricted Demand
1.00	4883	0	4883
2.00	4671	0	4671
3.00	4449		4449
4.00	4253	0	4253
5.00	4091	0	4091
6.00	4032	0	4032
7.00	4005	0	4005
8.00	4013	0	4013
9.00	4234	7	4241
10.00	4747	7	4754
11.00	5033	10	5043
12.00	5125	7	5132
13.00	5185	0	5185
14.00	5195	0	5195
15.00	5520	17	5537
15.30.47	5707	0	5707
16.00	5631	10	5641
17.00	5452	10	5462
18.00	5199	0	5199
19.00	5018	4	5022
20.00	5157	82	5239
21.00	5116	126	5242
22.00	5351	127	5478
23.00	5531	116	5647
24.00	5375	13	5388
<b>Total (IN MUS)</b>	<b>117.129</b>	<b>0.930</b>	<b>118.059</b>



14 **LOAD DURATION CURVE FOR AUGUST 2016**

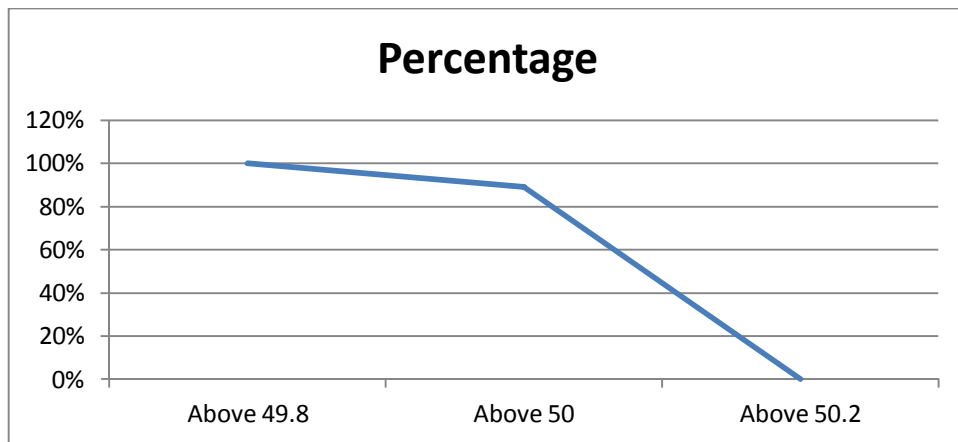
<b>Load in MW</b>	<b>Percentage of Time</b>
Above 2900	100%
Above 3200	98.89%
Above 3500	92.27%
Above 3800	77.96%
Above 4100	63.31%
Above 4400	44.56%
Above 4700	22.51%
Above 5000	8.40%
Above 5300	1.65%
Above 5600	0.13%





## FREQUENCY ANALYSIS FOR THE MONTH OF AUGUST 2016

Frequency Range in Hz.	Percentage of time
Above 49.8	100%
Above 50	89.01%
Above 50.2	0.24%



**16 VOLTAGE PROFILE OF 220 KV SUB-STATIONS IN DELHI DURING AUGUST 2016**

**All figures in kV**

Date	NARELA		GAZIPUR	
	Max	Min	Max	Min
01.Aug.16	226.72	213.95	210.73	210.73
02.Aug.16	226.34	212.67	210.73	196.42
03.Aug.16	226.72	212.02	213.95	190.74
04.Aug.16	224.14	198.54	202.22	189.19
05.Aug.16	223.76	207.64	206.35	192.16
06.Aug.16	224.66	215.63	202.73	192.68
07.Aug.16	226.34	212.54	211.25	192.16
08.Aug.16	224.79	213.18	206.86	192.68
09.Aug.16	225.30	212.54	197.32	189.45
10.Aug.16	226.08	213.44	204.15	195.38
11.Aug.16	225.69	215.76	213.05	192.42
12.Aug.16	226.85	214.60	213.70	193.71
13.Aug.16	228.14	215.12	217.82	197.83
14.Aug.16	227.24	214.99	219.24	196.35
15.Aug.16	227.88	214.08	217.18	194.61
16.Aug.16	225.30	212.67	211.76	196.42
17.Aug.16	226.21	215.12	214.73	201.70
18.Aug.16	226.85	217.05	214.73	202.99
19.Aug.16	225.56	213.31	215.12	199.90
20.Aug.16	226.08	214.99	215.76	197.06
21.Aug.16	227.88	213.83	213.95	198.48
22.Aug.16	225.95	214.73	213.44	197.70
23.Aug.16	226.34	214.08	214.99	199.25
24.Aug.16	226.34	214.99	214.34	198.35
25.Aug.16	227.63	217.95	215.37	200.93
26.Aug.16	227.63	212.79	214.73	196.42
27.Aug.16	226.21	215.12	219.76	197.58
28.Aug.16	226.59	215.37	215.76	199.64
29.Aug.16	227.37	216.66	218.47	199.25
30.Aug.16	226.72	215.24	211.25	198.87
31.Aug.16	228.66	216.53	220.15	202.22

**17 VOLTAGE PROFILE OF 400 KV SUB-STATIONS IN DELHI DURING AUGUST 2016**

**All figures in kV**

Date	400kV Bamnauli Grid Sub-Station				
	Max KV	Max Time	Min KV	Min Time	Average KV
01.Aug.16	412.70	06.01	388.78	19.35	401.03
02.Aug.16	413.40	06.01	390.19	14.34	402.10
03.Aug.16	411.52	08.02	--	--	399.21
04.Aug.16	410.12	08.03	381.04	14.36	396.26
05.Aug.16	407.54	06.58	377.52	12.21	394.13
06.Aug.16	406.37	06.02	3387.37	19.46	396.80
07.Aug.16	413.17	06.05	389.95	19.51	402.53
08.Aug.16	411.06	07.30	392.06	22.09	401.38
09.Aug.16	409.88	06.03	387.61	12.34	398.99
10.Aug.16	414.81	06.01	389.25	1935	400.00
11.Aug.16	412.70	07.55	390.19	14.21	402.38
12.Aug.16	411.99	05.05	390.19	19.36	402.82
13.Aug.16	414.57	05.37	393.23	20.49	402.81
14.Aug.16	414.34	06.04	391.12	20.09	404.49
15.Aug.16	415.04	06.01	389.95	19.53	405.37
16.Aug.16	411.52	06.57	391.59	14.54	400.89
17.Aug.16	412.70	07.00	394.41	22.14	402.60
18.Aug.16	413.17	06.03	396.05	20.29	403.83
19.Aug.16	411.29	04.02	389.25	19.38	401.92
20.Aug.16	411.29	06.03	392.76	19.51	401.63
21.Aug.16	413.40	06.01	390.19	19.37	400.80
22.Aug.16	409.18	06.01	392.30	13.58	400.87
23.Aug.16	412.70	06.02	392.30	22.13	401.47
24.Aug.16	411.52	06.03	390.19	14.16	402.82
25.Aug.16	415.04	06.02	398.63	12.40	405.29
26.Aug.16	415.04	06.05	393.70	14.36	402.04
27.Aug.16	412.23	06.03	386.67	11.43	395.85
28.Aug.16	387.84	00.44	387.84	00.44	387.84
29.Aug.16	411.29	17.01	387.84	00.46	398.27
30.Aug.16	413.40	03.34	392.30	19.41	404.26
31.Aug.16	415.98	06.04	395.11	19.24	405.15

Date	400kV Bawana Grid Sub-Station				
	Max KV	Max Time	Min KV	Min Time	Average KV
01.Aug.16	421.37	06.01	399.57	19.43	409.99
02.Aug.16	421.37	06.04	399.57	14.33	410.60
03.Aug.16	420.20	06.01	397.22	14.43	408.69
04.Aug.16	415.74	05.59	393.47	14.36	405.58
05.Aug.16	415.04	06.58	394.64	11.15	404.99
06.Aug.16	416.92	08.01	402.85	19.46	409.79
07.Aug.16	419.50	06.02	399.33	22.32	410.27
08.Aug.16	416.58	06.02	400.27	22.08	407.72
09.Aug.16	416.21	06.01	397.92	19.50	407.22
10.Aug.16	421.37	06.01	400.27	19.36	408.29
11.Aug.16	419.73	07.47	403.79	14.41	411.31
12.Aug.16	420.43	04.36	404.02	11.09	412.40
13.Aug.16	420.20	05.05	401.68	14.26	411.34
14.Aug.16	421.61	06.04	400.27	20.07	412.34
15.Aug.16	422.55	06.02	399.57	19.49	413.28
16.Aug.16	416.21	03.23	397.22	14.54	408.27
17.Aug.16	416.92	06.01	400.97	11.53	408.55
18.Aug.16	419.26	06.03	404.49	20.29	410.84
19.Aug.16	417.15	04.00	396.75	19.35	408.08
20.Aug.16	418.32	06.02	400.74	19.40	408.37
21.Aug.16	419.50	06.01	398.63	19.41	406.56
22.Aug.16	413.67	18.02	399.80	13.57	404.98
23.Aug.16	419.03	06.03	400.27	14.23	408.44
24.Aug.16	419.03	08.05	401.44	14.17	410.56
25.Aug.16	421.37	06.03	405.66	19.36	411.96
26.Aug.16	421.37	06.03	400.97	11.06	409.32
27.Aug.16	419.50	06.08	401.91	19.39	410.20
28.Aug.16	420.90	06.06	401.68	19.39	410.37
29.Aug.16	420.90	06.03	404.25	17.46	413.05
30.Aug.16	422.55	03.34	401.44	19.41	411.11
31.Aug.16	424.42	06.03	402.61	19.38	414.60

## 18 DETAILS OF LUMPED CAPACITORS AT NEAREST 220 KV SUBSTATION

Sl. No	SUB-STATION	INSTALLED CAPACITY			
		66KV	33kv	11kv	TOTAL
1	IP YARD		30.00		30.00
1	Kamla Market			16.35	16.35
2	Minto Road				0.00
3	GB Pant Hosp			10.48	10.48
4	Delhi Gate			16.30	16.30
5	Tilakmarg			5.04	5.04
7	Cannaught Place			10.08	10.08
8	Kilokri		10.08	10.48	20.56
9	NDSE-II				0.00
11	Nizamuddin				0.00
12	Exhibition-I				0.00
13	Exhibition-II				0.00
14	Defence Colony				0.00
15	IG Stadium		10.08	5.45	15.53
16	Lajpat Nagar				0.00
17	IP Estate			10.90	10.90
		0.00	50.16	85.08	135.24
2	Electric Lane				
1	Electric Lane			5.04	5.04
2	Scindia House			10.44	10.44
3	Mandi House			10.80	10.80
4	Raisina Road			10.08	10.08
5	Raja Bazar			10.08	10.08
		0.00	0.00	46.44	46.44
3	RPH Station		20.00		20.00
1	Lahori Gate			10.49	10.49
2	Jama Masjid			10.48	10.48
4	Kamla Market				0.00
5	Minto Road			10.90	10.90
6	GB Pant Hosp				0.00
7	IG Stadium				0.00
		0.00	20.00	31.87	51.87
4	Parkstreet S/stn	20.00	20.00		40.00
1	Shastri Park		10.90	5.45	16.35
2	Faiz Road			18.05	18.05
3	Motia Khan			16.30	16.30
4	Prasad Nagar			16.25	16.25
5	Anand Parbat			10.80	10.80
6	Shankar Road			10.44	10.44
7	Rama Road			0.00	0.00
8	Baird Road			10.08	10.08
9	Hanuman Road			10.08	10.08
10	Pusa			5.44	5.44
11	Ridge Valley			0.00	0.00
12	B. D. Marg			5.40	5.40
13	Nirman Bhawan			5.04	5.04
		20.00	30.90	113.33	164.23
5	Naraina S/stn		20.00	5.04	25.04
1	DMS			10.85	10.85
2	Mayapuri		10.87	10.40	21.27
3	Inderpuri		13.26	5.04	18.30
4	Rewari line				0.00
5	Khyber Lane		10.05		10.05
6	Kirbi Place		10.05		10.05
7	Payal			10.08	10.08
8	A-21 Naraina			4.80	4.80
8	Saraswati Garden			10.08	10.08
		0.00	64.23	56.29	120.52

Sl. No	SUB-STATION	INSTALLED CAPACITY			
		66KV	33kV	11kV	TOTAL
6	Mehrauli S/stn	80.00		5.04	85.04
1	Adchini			14.61	14.61
2	Andheria Bagh			10.85	10.85
3	IIT			10.90	10.90
4	JNU		10.03	10.03	20.06
5	Bijwasan			15.47	15.47
6	DC Saket		10.08	9.98	20.06
7	Malviya Nagar				0.00
8	C Dot			10.48	10.48
9	Vasant kunj B-Blk	21.79		10.90	32.69
10	Vasant kunj C-Blk	20.16		10.48	30.64
11	Palam				0.00
12	IGNOU			5.04	5.04
13	R. K. Puram-I			10.07	10.07
14	Vasant Vihar			19.25	19.25
15	Pusp Vihar			10.44	10.44
16	Bhikaji Cama Place		10.08	10.07	20.15
		121.95	30.19	163.61	315.75
7	Vasantkunj S/stn	40.00		5.04	45.04
1	R. K. Puram-II			10.80	10.80
2	Vasant kunj C-Blk				0.00
3	Vasant kunj D-Blk			9.63	9.63
4	Ridge Valley				0.00
		40.00	0.00	25.47	65.47
8	Okhla S/stn	60.00	10.00	5.04	75.04
1	Balaji			10.80	10.80
2	East of Kailash			15.89	15.89
3	Alaknanda			16.30	16.30
4	Malviya Nagar	21.79	20.16	10.85	52.80
5	Masjid Moth			16.30	16.30
6	Nehru Place			21.34	21.34
7	Okhla Ph-I	21.79		16.30	38.09
8	Okhla Ph-II		20.93	15.47	36.40
9	Shivalik			10.80	10.80
10	Batra			15.90	15.90
11	VSNL			10.90	10.90
12	Siri Fort			10.49	10.49
13	Tuglakabad			10.85	10.85
		103.58	51.09	187.23	341.90
9	Lodhi Road S/stn			20.00	20.00
1	Defence Colony			14.85	14.85
2	Hudco			10.90	10.90
3	Lajpat Nagar			10.90	10.90
4	Nizamuddin			10.44	10.44
5	Vidyut Bhawan (Shahjahan Rd)			10.80	10.80
6	Ex. Gr. II			0.00	0.00
7	IHC			0.00	0.00
		0.00	0.00	77.89	77.89
10	Sarita Vihar S/stn	20.00		5.04	25.04
1	Sarita Vihar			10.07	10.07
2	MCIE			10.06	10.06
3	Mathura Road	20.16		11.69	31.85
4	Jamia Millia			10.89	10.89
5	Sarai Julena		10.08	16.29	26.37
6	Jasola			5.44	5.44
		40.16	10.08	69.48	119.72

Sl. No	SUB-STATION	INSTALLED CAPACITY			
		66KV	33kV	11kV	TOTAL
11	Wazirabad				
1	Bhagirathi		14.40	18.10	32.50
2	Ghonda	21.79	22.56	15.94	60.29
3	Seelam Pur		10.08	21.39	31.47
4	Dwarkapuri			15.46	15.46
5	Nandnagri	20.16		16.35	36.51
6	Yamuna Vihar			14.40	14.40
7	East of Loni Road			18.00	18.00
8	Shastri Park			10.90	10.90
9	Karawal Nagar			5.40	5.40
10	Sonia Vihar			14.70	14.70
		41.95	47.04	150.64	239.63
12	Geeta Colony				
1	Geeta Colony			10.49	10.49
2	Kanti Nagar			18.10	18.10
3	Kailash Nagar			15.48	15.48
4	Seelam Pur				0.00
5	Shakar Pur			10.80	10.80
		0.00	0.00	54.87	54.87
13	Gazipur S/stn	40.00		5.04	45.04
1	Dallupura	28.80		10.90	39.70
2	Vivek Vihar			9.57	9.57
3	GT Road			10.85	10.85
4	Kondli	20.16		10.85	31.01
5	MVR-I			10.90	10.90
6	MVR-II	20.16		10.44	30.60
7	PPG Ind. Area			10.06	10.06
		109.12	0.00	78.61	187.73
14	Patparganj S/stn	40.00	20.00	5.04	65.04
1	GH-I	19.89		10.45	30.34
2	GH-II	20.09		10.90	30.99
3	CBD		10.03	15.48	25.51
4	Guru Angad Nagar			15.49	15.49
5	Karkadooma		10.80	10.44	21.24
6	Preet Vihar			10.07	10.07
7	CBD-II			10.80	10.80
8	Shakarpur				0.00
9	Jhilmil			10.80	10.80
10	Dilshad Garden	20.16		16.35	36.51
11	Khichripur	21.79		15.89	37.68
12	Mother Dairy				0.00
13	Scope Building				0.00
14	Vivek Vihar				0.00
15	Akhardham			14.60	14.60
		121.93	40.83	146.31	309.07
15	Najafgarh S/stn	60.00		5.04	65.04
1	A4 Paschim Vihar			10.80	10.80
2	Nangloi	21.73		15.84	37.57
3	Nangloi W/W	20.89		10.85	31.74
4	Pankha Road			15.88	15.88
5	Jaffarpur			15.43	15.43
7	Inst. Area Janakpuri (Sagarpur)			17.60	17.60
8	Paschimpuri		10.05	15.47	25.52
9	Paschim Vihar	41.83		15.43	57.26
10	Mukherjee Park			20.83	20.83
11	Udyog Nagar			10.43	10.43
12	Choukhandi			10.07	10.07
13	DJB Najafgarh			21.60	21.60
		144.45	10.05	185.27	339.77

Sl. No	SUB-STATION	INSTALLED CAPACITY			
		66KV	33kV	11kV	TOTAL
16	Pappankalan-I S/stn	20.00		5.04	25.04
1	Bindapur Grid G-3 PPK	21.73		15.85	37.58
2	Bodella-I	20.10		16.24	36.34
3	Bodella-II	21.73		17.64	39.37
4	DC Janakpuri			10.03	10.03
5	G-2 PPK (Nasirpur)			10.80	10.80
6	G-5 PPK (Matiala)			15.51	15.51
7	G-6 PPK			5.40	5.40
8	G-15 PPK			10.80	10.80
9	Harinagar	21.18		16.25	37.43
10	Rewari line			5.44	5.44
		104.74	0.00	129.00	233.74
17	BBMB Rohtak Road				
1	S.B. Mill			10.07	10.07
2	Rama Road			10.88	10.88
3	Ram Pura			10.48	10.48
4	Rohtak Road			10.08	10.08
5	Vishal			10.40	10.40
6	Madipur			10.43	10.43
7	Sudershan Park			10.08	10.08
8	Kirti Nagar			5.44	5.44
		0.00	0.00	77.86	77.86
18	Shalimarbagh S/stn		40.00	6.00	46.00
1	S.G.T. Nagar			5.44	5.44
2	Ashok Vihar			0.00	0.00
3	Haiderpur			11.39	11.39
4	SMB FC			12.64	12.64
5	Rani Bagh			5.44	5.44
6	SMB KHOSLA			5.44	5.44
		0.00	40.00	46.35	86.35
19	Subzimandi S/stn			6.00	6.00
1	Shakti Nagar			5.04	5.04
2	Gulabibagh			10.88	10.88
3	Shahzadabagh			15.79	15.79
4	DU			5.44	5.44
5	Tripolia			10.88	10.88
6	B. G. Road			5.40	5.40
		0.00	0.00	59.43	59.43
20	Narela S/stn	40.00		5.04	45.04
1	A-7 Narela			10.88	10.88
2	Azad Pur			5.44	5.44
3	Badli	20.00		5.95	25.95
4	DSIDC Narela-1			5.95	5.95
5	GTK			5.94	5.94
6	Jahangirpuri	20.00	10.00	0.00	30.00
7	Bhalswa			12.64	12.64
8	Pitampura-I	20.00		5.04	25.04
9	RG-1			5.44	5.44
		100.00	10.00	62.32	172.32



Sl. No	SUB-STATION	INSTALLED CAPACITY			
		66KV	33kV	11kV	TOTAL
21	Gopalpur S/stn		30.00	5.04	35.04
1	Hudson Lane			5.95	5.95
2	Wazirabad			7.20	7.20
3	Indra Vihar			5.95	5.95
4	DIFR			5.44	5.44
5	GTK Road			5.44	5.44
6	Jahangirpuri		10.00	5.95	15.95
7	Civil lines			7.20	7.20
8	Pitam Pura-3			5.44	5.44
9	SGT Nagar			5.95	5.95
10	Tiggipur			10.88	10.88
11	Model Town			14.40	14.40
12	Azad Pur			5.44	5.44
		0.00	40.00	90.28	130.28
22	Rohini S/stn	40.00		6.00	46.00
1	Rohini Sec-22			18.08	18.08
2	Rohini Sec-24			5.44	5.44
3	Rohini-3			5.95	5.95
4	Rohini-4			11.39	11.39
5	Rohini-5			11.39	11.39
6	Rohini-6			0.00	0.00
7	Mangolpuri-2	20.00		7.20	27.20
8	Pitam Pura-1			5.44	5.44
9	Pitam Pura-2			10.48	10.48
10	Rohini DC-1			14.40	14.40
11	AIR Kham pur			11.90	11.90
		60.00	0.00	107.67	167.67
23	Kanjhawala S/stn	20.00		5.04	25.04
1	Bawana Clear Water			14.30	14.30
2	Pooth Khoord	20.00		5.44	25.44
4	Rohini -2			13.15	13.15
		40.00	0.00	37.93	77.93
24	BAWANA S/stn				
1	Bawana S/stn No. 6			10.88	10.88
2	Bawana S/stn No. 7			7.20	7.20
		0.00	0.00	18.08	18.08
25	Kashmeregate S/stn			5.04	5.04
1	Civil lines			7.20	7.20
2	Town Hall			8.64	8.64
3	Fountain			5.45	5.45
		0.00	0.00	26.33	26.33
26	Pappankalan-II				
1	DMRC				0.00
2	HASTAL			21.60	21.60
3	GGSH			10.80	10.80
		0.00	0.00	32.40	32.40
27	Trauma Center (AIIMS)				
1	AIIMS		13.26	5.04	18.30
2	Trauma Center			10.08	10.08
3	Netaji Nagar			15.12	15.12
4	Sanjay Camp			10.08	10.08
5	Kidwai Nagar			10.08	10.08
6	SJ Airport			5.04	5.04
7	Race Course			10.44	10.44
		0.00	13.26	65.88	79.14

Sl. No	SUB-STATION	INSTALLED CAPACITY			
		66KV	33kV	11kV	TOTAL
28	MUNDKA				
1	Mangolpuri-I			20.35	20.35
2	Rohini Sec-23	20.00		12.64	32.64
3	66kV Mundka			21.60	21.60
		20.00	0.00	54.59	74.59
29	DSIDC BAWANA				
1	DSIDC NRL-1	20.00			20.00
2	DSIDC NRL-2			16.32	16.32
3	Bawana Clear Water			7.30	7.30
4	Bawana-1			14.40	14.40
		20.00	0.00	38.02	58.02
30	RIDGE VALLEY				
1	Keventry Diary			10.08	10.08
2	Nehru Park			5.04	5.04
3	State Guest House			5.40	5.40
4	Bapu Dham			15.48	15.48
		0.00	0.00	36.00	36.00
31	IP EXTN (PRAGATI)				
1	Vidyut Bhawan			10.08	10.08
2	Dalhousie Road			5.04	5.04
3	National Archives			10.08	10.08
4	School Lane			10.44	10.44
		0.00	0.00	35.64	35.64
32	Wazirpur				
1	Tri Nagar			10.88	10.88
2	Wazirpur-1			17.18	17.18
3	Wazirpur-2			13.20	13.20
4	Ashok vihar			17.80	17.80
5	Azad Pur			5.44	5.44
6	GTK			4.80	4.80
		0.00	0.00	69.30	69.30
33	Peeragarhi				
1	Rani Bagh			5.44	5.44
2	Rani Bagh cc			9.60	9.60
		0.00	0.00	15.04	15.04
34	Rohini-II				
1	Rohini-6			13.15	13.15
		0.00	0.00	13.15	13.15

Utility	HT	LT	Total
BYPL	901.18	102.00	1003.18
BRPL	1264.49	242.00	1506.49
TPDDL	820.34	119.00	939.34
NDMC	253.74	24.00	277.74
DTL	753.52	0.00	753.52
IPGCL (RPH)	20.00	0.00	20.00
MES	20.10	0.00	20.10
<b>TOTAL</b>	<b>4033.37</b>	<b>487.00</b>	<b>4520.37</b>

**20 DETAILS OF BREAK-DOWNS DURING THE MONTH OF AUGUST 2016**

SL NO	OCCURRENCE OF BREAK-DOWN		DETAILS OF THE BREAKDOWN	TIME OF RESTORATION		REMARKS
	DATE	TIME		DATE	TIME	
1	5.7.16	10:55	OKHLA 220/33kv 100MVA Tx-IV	1.8.16	18:40	TR. TRIPPED ON 30A, BUCHOLZ, CTR, DIFFERENTIAL RELAY, 86, 164, INTERNAL FLASH IN WINDING AND BUSHING GOT DAMAGED.
2	1.8.16	06:40	400kv Ballabgarh-Bamnauli Ckt-I	1.8.16	07:49	AT BAMNAULI CKT. TRIPPED ON 186A&B, 85LO.
3	1.8.16	10:15	VASANT KUNJ 66/11kv, 20MVA Tx-I	2.8.16	16:10	11KV I/C-II TRIPPED ON 51A, R PHASE, 86.
4	1.8.16	15:57	220kv WAZIRABAD-GEETA COLONY CKT-I	1.8.16	17:20	AT WAZIRABAD CKT. TRIPPED ON DIST PROT, ZONE-I, DIST 1.3KM. AT GEETA COLONY CKT. TRIPPED ON TRIP PHASE ABC, O/C, DIST PROT, ZONE-I, DIST 3.974KM.
5	2.8.16	13:40	220kv PRAGATI - SARITA VIHAR CKT-II	2.8.16	14:05	AT PRAGATI CKT. TRIPPED ON DIST PROT, ZONE-I, DIST 8.008KM. AT SARITA VIHAR CKT. TRIPPED ON DIST PROT, ZONE-I, DIST 6.48KM, 186ABC.
6	3.8.16	06:05	OKHLA 220/33kv 100MVA Tx-IV	3.8.16	09:15	33KV I/C-3 OF TX TRIPPED ON E/F,86.
7	3.8.16	06:05	OKHLA 33kv NEHRU PLACE CKT-I	4.8.16	00:30	CKT TRIPPED ON D/P,Z-1&2,R-PH,DIST-01KM,E/F. R & Y-PH CT DAMAGED AND R-PH JUMPER OF THE CKT TOWARDS BUS-2 SNAPPED.
8	3.8.16	06:05	OKHLA 220/33kv 100MVA Tx-III	3.8.16	09:15	33KV I/C-3 OF TX TRIPPED ON E/F,86.
9	3.8.16	11:20	220kv DIAL- MEHRAULI CKT-II	3.8.16	15:21	AT MEHRAULI CKT TRIPPED ON 186A&B. R-PH LINE ISOLATOR JUMPER SNAPPED AT MEHRAULI YARD. CKT DID NOT TRIP AT DIAL.
10	4.8.16	10:12	SUBZI MANDI 33/11kv, 16MVA Tx-I	4.8.16	11:15	TX TRIPPED ON 30ABC,86.
11	4.8.16	10:29	SUBZI MANDI 33/11kv, 16MVA Tx-II	4.8.16	10:38	TX TRIPPED ON B-PH O/C.
12	4.8.16	11:40	RIDGE VALLEY 220/66kv 160MVA Tx-I	4.8.16	13:25	TX TRIPPED ON PRV, 86A & 86B.
13	4.8.16	12:24	BAMNAULI 400/220kv 315MVA ICT-IV	4.8.16	13:07	ICT TRIPPED ON 186A&B GROUP-2 ALONG WITH I/C-4.
14	4.8.16	12:24	NAJAFGARH 220/66kv 100MVA Tx-IV	4.8.16	13:32	TX TRIPPED ON E/F,86.
15	4.8.16	12:24	BAMNAULI 400/220kv 500MVA ICT-II	4.8.16	13:07	ICT TRIPPED ON 186A&B GROUP-2 ALONG WITH I/C-2.
16	4.8.16	12:24	BAMNAULI 400/220kv 315MVA ICT-I	4.8.16	13:07	ICT TRIPPED ON 186A&B GROUP-2 ALONG WITH I/C-1.
17	4.8.16	12:24	PAPPANKALAN-I 220/66kv 100MVA Tx-I	4.8.16	13:23	TX TRIPPED ON 51N,86B.
18	4.8.16	12:24	BAMNAULI 400/220kv 500MVA ICT-III	4.8.16	13:07	ICT TRIPPED ON 186A&B GROUP-2 ALONG WITH I/C-3.
19	4.8.16	12:24	220kv BAMNAULI-PAPPANKALAN-II CKT-I	4.8.16	13:12	AT PPK-2 CKT TRIPPED ON D/P,Z-1&2,86. CKT DID NOT TRIP AT BAMNAULI.
20	4.8.16	12:24	220kv BAMNAULI-PAPPANKALAN-I CKT-II	4.8.16	13:26	AT PPK-1 CKT TRIPPED ON 51N, 86B. CKT DID NOT TRIP AT BAMNAULI.
21	4.8.16	12:24	220kv BAMNAULI - DIAL CKT-I	4.8.16	13:09	AT DIAL CKT TRIPPED ON D/P,Z-2,RY&B-PH,REL MAIN-II. CKT DID NOT TRIP AT BAMNAULI.
22	4.8.16	12:24	220kv BAMNAULI - DIAL CKT-II	4.8.16	13:27	AT DIAL CKT TRIPPED ON D/P,Z-2,RY&B-PH,REL MAIN-II. CKT DID NOT TRIP AT BAMNAULI.
23	4.8.16	12:27	220kv MEHRAULI - BTPS CKT. - II	5.8.16	00:33	AT BTPS CKT TRIPPED ON D/P,Z-1,R-PH,DIST-4.5KM. CKT DID NOT TRIP AT MEHRAULI.
24	4.8.16	15:45	RIDGE VALLEY 220/66kv 160MVA Tx-II	4.8.16	16:30	TX TRIPPED WITHOUT INDICATION. 66KV I/C-2 TRIPPED ON GEN TRIP TOC R-PH 86A&B.
25	5.8.16	22:11	PAPPANKALAN-I 220/66kv 100MVA Tx-I	5.8.16	22:54	TX TRIPPED ON O/C.
26	5.8.16	22:11	PAPPANKALAN-I 220/66kv 160MVA Tx-I	5.8.16	22:47	TX TRIPPED ON O/C.
27	5.8.16	22:59	SUBZI MANDI 220/33kv 100MVA Tx-II	6.8.16	12:38	TX TRIPPED ON E/F,86 AND 33KV I/C-2 OF TX TRIPPED ON E/F,186,86.
28	6.8.16	01:05	GAZIPUR 66/11kv, 20MVA Tx-II	6.8.16	07:05	TR. TRIPPED ON SUPERVISION RELAY, 86. I/C ALSO TRIPPED.
29	6.8.16	04:15	NARAINA 220/33kv 100MVA Tx-III	6.8.16	12:42	TR. TRIPPED ON 86, 69LV, E/F. I/C -III TRIPPED ON AC SUPERVISION RELAY.

SL NO	OCCURRENCE OF BREAK-DOWN		DETAILS OF THE BREAKDOWN	TIME OF RESTORATION		REMARKS
	DATE	TIME		DATE	TIME	
30	6.8.16	15:55	220kV MUNDKA-NAJAFGARH CKT	6.8.16	16:04	AT MUNDKA CKT. TRIPPED ON DIST PROT, ZONE-I, RYB PHASE, 86AB. AT NAJAFGARH CKT. DID NOT TRIP.
31	6.8.16	21:25	GAZIPUR 66/11kV, 20MVA Tx-II	6.8.16	21:58	TR. TRIPPED ALONGWITH I/C WHICH TRIP ON INTER TRIPPING.
32	7.8.16	10:45	220kV GAZIPUR - BTPS CKT	7.8.16	17:40	AT BTPS CKT. TRIPPED ON DIST PROT, ZONE-I, DIST 13.19KM. CKT. WAS IN OFF POSITION AT GAZIPUR.
33	8.8.16	09:20	RIDGE VALLEY 220/66kV 160MVA Tx-I	8.8.16	13:45	TR. TRIPPED ON 86AB, PRD RELAY. 66KV I/C-I TRIPPED ON 86.
34	8.8.16	18:18	220kV GOPALPUR-SUBZI MANDI CKT-I	8.8.16	19:32	AT GOPALPUR CKT. TRIPPED ON DIST PROT, ZONE-I, DIST 1.4KM, AT SUBZI MANDI CKT. DID NOT TRIP.
35	9.8.16	05:50	SARITA VIHAR 66/11kV, 20MVA Tx-II	9.8.16	06:12	TR. TRIPPED ON 30D, OLTC, BUCHHOLZ.
36	9.8.16	05:50	SARITA VIHAR 11kV JAIPUR	9.8.16	06:10	CKT. TRIPPED ALONGWITH 20MVA -II WHICH WAS TRIPPED ON 30D, OLTC, BUCHHOLZ.
37	11.8.16	03:09	BAMNAULI 400/220kV 315MVA ICT-I	10.8.16	09:45	ICT TRIPPED ON BUCHHOLZ, OLTC, B PHASE, 186A&B.
38	11.8.16	13:50	400kV Ballabgarh-Bamnauli Ckt-I	11.8.16	14:39	AT BAMNAULI CKT. TRIPPED ON 186A&B.
39	12.8.16	10:10	220kV BAMNAULI - DIAL CKT-II	12.8.16	10:14	AT DIAL CKT. TRIPPED ON GEN TRIP., LINE DIFF. OPERATED, RYB PHASE TRIP. AT BAMNAULI CKT. DID NOT TRIP.
40	13.8.16	11:37	220kV MUNDKA-KANJHAWALA CKT	13.8.16	12:10	AT MUNDKA CKT. TRIPPED ON DIST PROT, ZONE-II, R PHASE. AT KHANJAWALA CKT. WAS IN OFF POSITION.
41	13.8.16	14:27	220kV MEHRAULI - BTPS CKT. - II	13.8.16	19:35	AT MEHRAULI CKT. TRIPPED ON DIST PROT, ZONE-I, DIST 5.276KM, ACTIVE GROUP -I, TRIP PHASE ABC. AT BTPS CKT. TRIPPED ON DIST PROT, ZONE-I, DIST 14KM, R PHASE.
42	13.8.16	14:30	NARAINA 220/33kV 100MVA Tx-III	13.8.16	15:31	TR. TRIPPED WITHOUT INDICATION. 33KV I/C-III DID NOT TRIP.
43	14.8.16	07:36	WAZIRABAD 220/66kV 160MVA Tx-I	14.8.16	08:13	TR. TRIPPED DURING CHECKING OF GAS LEAKAGE.
44	14.8.16	10:02	220kV BAWANA-DSIIDC BAWANA CKT-I	14.8.16	12:55	AT DSIDC CKT. TRIPPED ON DIST PROT, ZONE-I, DIST 3.795KM. AT BAWANA CKT. TRIPPED ON DIST PROT. ZONE-I, DIST 1.7KM.
45	15.8.16	06:55	PATPARGANJ 220/33kV 100MVA Tx-III	15.8.16	12:27	TR. TRIPPED ON E/F, 86, DIFFERENTIAL, 33KV I/C-III TRIPPED WITHOUT INDICATION.
46	15.8.16	08:05	MEHRAULI 220/66kV 100MVA Tx-III	15.8.16	12:15	TR. TRIPPED WITHOUT INDICATION. I/C DID NOT TRIP.
47	15.8.16	09:09	220KV WAZIRABAD - MANDOLA CKT-IV	15.8.16	10:46	AT WAZIRABAD CKT. TRIPPED ON DIST PROT, ZONE-I, DIST 6.367KM. AT MANDOLA CKT. TRIPPED ON DIST PROT, ZONE-I, DIST 8.059KM.
48	15.8.16	09:16	220kV GAZIPUR - BTPS CKT	15.8.16	12:07	AT BTPS CKT. TRIPPED ON DIST PROT, ZONE-1, DIST 10.7KM, E/F. CKT. WAS IN OFF POSITION AT GAZIPUR.
49	15.8.16	11:55	220 KV I.P.- RPH CKT-I	15.8.16	12:23	AT I.P. CKT. TRIPPED ON DIST PROT, ZONE-I, 86ABC. AT RPH CKT. DID NOT TRIP.
50	15.8.16	11:55	220 KV I.P.- RPH CKT-II	15.8.16	12:23	AT I.P. CKT. TRIPPED ON DIST PROT, ZONE-I, 86ABC. AT RPH CKT. DID NOT TRIP.
51	15.8.16	14:38	220kV GOPALPUR- MANDOLACKT-I	15.8.16	15:04	AT GOPALPUR CKT. DID NOT TRIP. AT MANDOLA CKT. TRIPPED ON DIST PROT, DIST 18.77KM, YB PHASE.
52	15.8.16	16:31	220kV GEETA COLONY- PATPARGANJ CKT - II	15.8.16	16:50	At Geeta Colony : Active Group-I, Trip Phase ABC, Dist Prot, Zone-II, Dist 4.882kms. At Patparganj : Ckt. did not trip.

SL NO	OCCURRENCE OF BREAK-DOWN		DETAILS OF THE BREAKDOWN	TIME OF RESTORATION		REMARKS
	DATE	TIME		DATE	TIME	
53	15.8.16	16:31	220 KV PATPARGANJ - I.P. CKT-I	15.8.16	16:50	At I.P.: 86, 186, Dist Prot, Zone-I, Trip Phase ABC. At Patparganj : Ckt. did not trip.
54	15.8.16	16:31	220KV GEETA COLONY- PATPARGANJ CKT-I	15.8.16	16:50	At Geeta Colony : Active Group-I, Trip Phase ABC, Dist Prot, Zone-II, Dist 4.882kms. At Patparganj : Ckt. did not trip.
55	15.8.16	19:50	LODHI RD 220/33kv 100MVA Tx-I	16.8.16	15:32	TR. TRIPPED ON DIST PROT, AUTO RECLOSE, 80DC-1, 80-DC-2.
56	15.8.16	23:15	OKHLA 33kv MASJID MOTH CKT	16.8.16	11:10	CKT. TRIPPED ON O/C, E/F. PROBLEM IN CIRCUIT BREAKER AT OKHLA.
57	15.8.16	23:15	OKHLA 220/33kv 100MVA Tx-IV	15.8.16	23:27	33KV I/C TRIPPED ON 86, E/F.
58	15.8.16	23:15	OKHLA 220/33kv 100MVA Tx-III	15.8.16	23:27	33KV I/C TRIPPED ON 86, E/F.
59	16.8.16	10:00	NARAINA 220/33kv 100MVA Tx-III	16.8.16	10:24	TR. TRIPPED ON 64 RHV & RLV.
60	16.8.16	16:49	220kv GEETA COLONY- PATPARGANJ CKT - II	16.8.16	16:58	AT GEETA COLONY CKT. TRIPPED ON DIST PROT, DIST 2.417KM. AT PATPARGANJ CKT. TRIPPED ON DIST PROT, ZONE-I, DIST 2.694KM, 186.
61	18.8.16	16:10	220kv WAZIRABAD-GEETA COLONY CKT-I	18.8.16	16:44	AT GEETA COLONY CKT. TRIPPED ON ACTIVE GROUP-I, DIST PROT, ZONE-I, DIST 2.488KM. AT WAZIRABAD CKT .TRIPPED ON DIST PROT, ZONE-I, DIST 2.9KM.
62	19.8.16	11:03	220kv GEETA COLONY- PATPARGANJ CKT-I	19.8.16	11:09	AT PATPARGANJ CKT. TRIPPED ON 186, TRIP ABC. AT GEETA COLONY CKT. TIRPPED ON DIST PROT, ZONE-I, DIST 2.226KM.
63	19.8.16	16:55	NARAINA 220/33kv 100MVA Tx-III	19.8.16	17:32	33KV I/C-III TRIPPED WITHOUT INDICATION.
64	19.8.16	17:10	NARAINA 220/33kv 100MVA Tx-I	19.8.16	17:32	33KV I/C-I TRIPPED ON 86.
65	19.8.16	17:10	NARAINA 220/33kv 100MVA Tx-II	19.8.16	17:32	33KV I/C-I TRIPPED ON 86B, O/C, E/F.
66	20.8.16	12:45	220kv KANJHAWALA-NAJAFGARH CKT	20.8.16	13:01	AT NAJAFGARH CKT. TRIPPED ON DIST PROT, ZONE-II, DIST 12.69KM, TRIP PHASE ABC. AT KHANJAWALA CKT. TRIPPED ON DIST PROT, Y & B PHASE.
67	20.8.16	19:10	220kv GAZIPUR - BTPS CKT	20.8.16	22:21	AT BTPS CKT. TRIPPED ON DIST PROT, ZONE-I, DIST 8.2KM.
68	21.8.16	12:15	NARAINA 220/33kv 100MVA Tx-III	21.8.16	17:42	TR. TRIPPED ON 86A, BUCHOLZ, 30ABC. I/C TRIPPED ON SUPERVISION RELAY.
69	21.8.16	15:58	WAZIRABAD 66/11kv, 20MVA Tx-III	21.8.16	16:08	TR. TRIPPED ON E/F.
70	23.8.16	15:24	HARSH VIHAR 400/220kv 315MVA ICT-III	23.8.16	17:22	ICT TRIPPED ON OLT, SURGE RELAY. 86.
71	23.8.16	15:26	220kv KANJHAWALA-NAJAFGARH CKT-2	23.8.16	15:36	AT KHANJAWALA CKT. TRIPPED ON DIST PROT., ZONE-I, DIST 5.1KM. AT NAJAFGARH CKT. DID NOT TRIP.
72	23.8.16	17:22	NARAINA 220/33kv 100MVA Tx-II	23.8.16	22:22	TR. TRIPPED ON 30AB, PROTECTION GROUP 86A.
73	24.8.16	10:04	220kv PRAGATI - SARITA VIHAR CKT-II	24.8.16	12:19	AT PRAGATI CKT. TRIPPED ON DIST PROT, ZONE-II, 186, AT SARITA VIHAR CKT. TRIPPED ON DIST PROT, ZONE-I, DIST .365KM, 186A.
74	24.8.16	15:11	NARAINA 220/33kv 100MVA Tx-II	24.8.16	15:36	TR. TRIPPED ON 86A, TROUBLE ABC, 30B.
75	24.8.16	18:01	220kv GOPALPUR- MANDOLACKT-I	24.8.16	18:30	AT GOPALPUR CKT. TRIPPED ON DIST PROT, ZONE-I, DIST 22.7KM. AT MANDOLA CKT. TRIPPED ON DIST PROT, DIST 21.4KM.
76	24.8.16	19:01	220kv GOPALPUR- MANDOLACKT-I	24.8.16	21:20	AT MANDOLA CKT. TRIPPED ON DIST PROT, DIST 21.18KM. AT GOPALPUR CKT. TRIPPED ON DIST PROT, ZONE-I, DIST 22.7KM.
77	26.8.16	10:51	220kv NARELA - MANDOLA CKT-I	26.8.16	14:25	AT NARELA CKT. TRIPPED ON DIST PORT, ZONE-I, DIST 1.26KM.
78	26.8.16	14:09	400kv Mandola-Bawana Ckt-I	26.8.16	17:55	AT BAWANA CKT. TRIPPED ON E/F, DIST PROT, ZONE-I, DIST 3.382KM. AT MANDOLA CKT. TRIPPED ON DIST PROT, DIST 18.31KM.
79	26.8.16	17:10	220kv MEHRAULI - VASANT KUNJ CKT.-I	26.8.16	19:50	AT MEHRAULI CKT. TRIPPED ON DIST PROT, ZONE-I, R PHASE. AT VASANT KUNJ CKT. DID NOT TRIP.

SL NO	OCCURRENCE OF BREAK-DOWN		DETAILS OF THE BREAKDOWN	TIME OF RESTORATION		REMARKS
	DATE	TIME		DATE	TIME	
80	27.8.16	16:36	HARSH VIHAR 220/66kV 160MVA ICT-2	27.8.16	16:47	TR. TRIPPED WHILE CHECKING DC LEAKAGE ON 86, REF. I/C TRIPPED ON 86LB.
81	28.8.16	12:36	220kV PRAGATI - SARITA VIHAR CKT - I	28.8.16	12:39	At Sarita Vihar : Tripped on ABC Phase, Dist Prot, Zone-I, O/C, E/F. At Pragati : Ckt. did not trip.
82	28.8.16	12:36	220kV PRAGATI - PARK STREET CKT-II	28.8.16	12:56	At Sarita Vihar : Tripped on ABC Phase, Dist Prot, Zone-II, Dist. 12.25KMS. 186, Auto Reclose. At Pragati : 186, 186, Dist prot, Trip Phase ABC.
83	28.8.16	16:08	HARSH VIHAR 220/66kV 160MVA ICT-2	28.8.16	16:23	66KV I/C-II TRIPPED ON DIRECTIONAL INDICATION.
84	29.8.16	11:28	220kV MEHRAULI - VASANT KUNJ CKT.- II	29.8.16	12:02	AT MEHRAULI CKT. TRIPPED ON DIST PROT, ZONE-I, 186A&B. AT VASANT KUNJ CKT. DID NOT TRIP.
85	29.8.16	11:35	NAJAFGARH 66kV JAFFERPUR CKT-I	29.8.16	13:50	SHUTDOWN OF CKT. TO ATTEND B PHASE ISOLATOR COMMON JUMPER.
86	29.8.16	11:40	MASJID MOTH 220/33kV 100MVA Tx-II	29.8.16	11:50	33KV I/C-II TRIPPED ON O/C, E/F, 86.
87	29.8.16	14:13	220kV MEHRAULI - BTPS CKT. - I	29.8.16	15:03	AT MEHRAULI CKT. TRIPPED ON DIST PROT, ZONE-I, DIST 8.040KM. AT BTPS CKT. TRIPPED ON B PHASE, DIST PROT, DIST 16.9KM.
88	29.8.16	17:31	220KVBAWANA- ROHINI CKT-II	29.8.16	19:10	AT BAWANA CKT. TRIPPED ON DIST PROT, R PHASE. AT ROHINI CKT. DID NOT TRIP.
89	29.8.16	19:53	BAWANA 400/220kV 315MVA ICT-IV	30.8.16	12:47	ICT TRIPPED ON DIFFERENTIAL PROT. RELAY & PRV RELAY.
90	29.8.16	23:11	400kV Mandola-Bawana Ckt-I	30.8.16	00:09	AT BAWANA CB NO. 1552 & CB NO. 1652 TRIPPED ON 186A&B AND CB 1652 ON DIST PROT, ZONE-I, DIST 23.58KM.
91	30.8.16	04:11	NARAINA 220/33kV 100MVA Tx-III	30.8.16	09:07	TR. TRIPPED ON 86B, LV 64 RLV, I/C TRIPPED ON INTERTRIP.
92	30.8.16	10:52	400kV Ballabgarh-Bamnauli Ckt-I	30.8.16	12:50	AT BAMNAULI CKT TRIPPED ON D/P,Z-1,RY&B-PH,DIST-7.19KM.
93	31.8.16	07:43	PATPARGANJ 220/66kV 100MVA Tx-II	31.8.16	13:40	TX TRIPPED ON REF,86,PSC AND 66KV I/C-2 TRIPPED WITHOUT INDICATION.
94	31.8.16	09:47	DSIIDC Bawana 220/66kV 100MVA Tx-III	31.8.16	12:20	TX TRIPPED ON DIFFERENTIAL PROTECTION,86.
95	31.8.16	10:15	INDRAPRASTHA POWER 220/33kV 100MVA Tx-I	31.8.16	10:47	33KV I/C-1 OF TX TRIPPED ON O/C,E/F,R&B-PH,86. MONKEY ELECTROCUTED IN YARD.
96	31.8.16	10:15	INDRAPRASTHA POWER 220/33kV 100MVA Tx-II	31.8.16	10:47	TX TRIPPED WITHOUT INDICATION.
97	31.8.16	10:15	INDRAPRASTHA POWER 33kV CONNAUGHT PLACE CKT (BAY-42)	31.8.16	16:43	CKT TRIPPED DUE TO MONKEY ELECTROCUTED IN YARD. R-PH ISOLATOR OF CKT DAMAGED.
98	31.8.16	15:40	PAPPANKALAN-I 66kV 20MVAR CAP. BANK	31.8.16	17:50	CAP BANK TRIPPED WITHOUT INDICATION.
99	31.8.16	17:31	PRAGATI 220/66kV 160MVA Tx-II	31.8.16	19:01	TX TRIPPED ON REF,86 AND I/C-2 TRIPPED ON E/F.
100	31.8.16	22:54	PAPPANKALAN-I 220/66kV 100MVA Tx-I	31.8.16	23:12	66KV I/C-1 TRIPPED WITHOUT INDICATION.

**20      DETAILS OF UNDER FREQUENCY RELAY OPERATIONS IN DELHI POWER SYSTEM DURING THE MONTH OF AUGUST 2016**

DATE	S. N.	TIME		Name of Grid	NAME OF AFFECTED FEEDERS	MODE	LOAD RELIEF IN MW
		OUT	IN				
				NIL			